

APPENDICES

Appendix 1: Risk summary table for relief valves at plant-1.

<i>Plant</i>	<i>Location ID</i>	<i>Device ID</i>	<i>Protected by Rupture Disc</i>	<i>Rupture Disk ID</i>	<i>Probability Category</i>	<i>Consequence Category</i>	<i>Criticality Rating</i>	<i>Inspection Priority</i>	<i>Last Inspection Date</i>
1	NG-101	NG-101	N		4	C	MEDIUM	18	12/09/1995
1	NG-102	NG-102	N		4	C	MEDIUM	18	13/12/2004
1	PSV-0007	124752	N		4	B	MEDIUM	15	08/03/2006
1	PSV-0029	322068	N		3	C	MEDIUM	14	29/07/1997
1	PSV-0047	124753	N		4	C	MEDIUM	18	08/03/2006
1	PSV-0101	124655	N		4	B	MEDIUM	15	08/03/2006
1	PSV-0204	124656	N		4	B	MEDIUM	15	08/03/2006
1	PSV-0205	124657	N		4	B	MEDIUM	15	08/03/2006
1	PSV-0210A	PSV-0210A	N		3	C	MEDIUM	14	01/03/1994
1	PSV-0210B	PSV-0210B	N		3	C	MEDIUM	14	01/03/1994
1	PSV-0210C	PSV-0210C	N		3	C	MEDIUM	14	01/03/1994
1	PSV-1	PSV-1	N		4	D	LOW	21	11/02/1999
1	PSV-1369-0	124658 A	N		3	C	MEDIUM	14	09/03/2006
1	PSV-1369-1	124658 B	N		3	C	MEDIUM	14	09/03/2006

<i>Plant</i>	<i>Location ID</i>	<i>Device ID</i>	<i>Protected by Rupture Disc</i>	<i>Rupture Disk ID</i>	<i>Probability Category</i>	<i>Consequence Category</i>	<i>Criticality Rating</i>	<i>Inspection Priority</i>	<i>Last Inspection Date</i>
1	PSV-1369-2	124658 C	N		3	C	MEDIUM	14	10/03/2006
1	PSV-1369-3	124659 D	N		3	C	MEDIUM	14	10/03/2006
1	PSV-1370-0	124659 A	N		3	C	MEDIUM	14	09/03/2006
1	PSV-1370-1	124659 B	N		3	C	MEDIUM	14	10/03/2006
1	PSV-1370-2	124659 C	N		3	C	MEDIUM	14	09/03/2006
1	PSV-1370-3	124658 D	N		3	C	MEDIUM	14	10/03/2006
1	PSV-1401-0	124660	N		4	C	MEDIUM	18	07/03/2006
1	PSV-1401-1	124661	N		4	C	MEDIUM	18	26/07/2006
1	PSV-1401-2	124662	N		4	C	MEDIUM	18	07/03/2006
1	PSV-1401-3	124663	N		4	C	MEDIUM	18	07/03/2006
1	PSV-1402-0	124827 A	N		4	C	MEDIUM	18	07/03/2006
1	PSV-1402-1	124827 B	N		4	C	MEDIUM	18	26/07/2006
1	PSV-1402-2	124827 C	N		4	C	MEDIUM	18	07/03/2006
1	PSV-1402-3	124827 D	N		4	C	MEDIUM	18	19/10/2004
1	PSV-1403-0	124828 A	N		4	C	MEDIUM	18	07/03/2006
1	PSV-1403-1	61389	N		4	C	MEDIUM	18	25/07/2006
1	PSV-1403-2	124828 C	N		4	C	MEDIUM	18	07/03/2006
1	PSV-1403-3	124628 B	N		4	C	MEDIUM	18	04/10/2007
1	PSV-1V11	2069201	N		3	B	MEDIUM HIGH	9	11/01/2001
1	PSV-2	PSV-2	N		4	D	LOW	21	11/02/1999
1	PSV-2305A	224832	N		4	B	MEDIUM	15	09/03/2006
1	PSV-2305B	224826	N		4	B	MEDIUM	15	09/03/2006
1	PSV-2305C	124665	N		4	B	MEDIUM	15	09/03/2006
1	PSV-2320A	124666 A	N		4	E	LOW	23	07/03/2006
1	PSV-2320S	124666 B	N		4	E	LOW	23	07/03/2006

<i>Plant</i>	<i>Location ID</i>	<i>Device ID</i>	<i>Protected by Rupture Disc</i>	<i>Rupture Disk ID</i>	<i>Probability Category</i>	<i>Consequence Category</i>	<i>Criticality Rating</i>	<i>Inspection Priority</i>	<i>Last Inspection Date</i>
1	PSV-2321A	124667 A	N		4	E	LOW	23	08/03/2006
1	PSV-2321S	329625	N		4	E	LOW	23	06/03/2006
1	PSV-2605	329628	N		2	D	MEDIUM	13	08/01/2001
1	PSV-2606	124669	N		4	B	MEDIUM	15	03/07/2007
1	PSV-2607	124668 B	N		2	D	MEDIUM	13	08/01/2001
1	PSV-2608	124668	N		2	D	MEDIUM	13	05/01/2001
1	PSV-2V11	2069202	N		3	B	MEDIUM HIGH	9	04/01/2001
1	PSV-3115	124670	N		4	B	MEDIUM	15	02/02/2006
1	PSV-3118A	224833	N		4	B	MEDIUM	15	25/01/2006
1	PSV-3118B	224828	N		4	B	MEDIUM	15	26/01/2006
1	PSV-3118C	329610	N		4	B	MEDIUM	15	27/01/2006
1	PSV-3123A	224834	N		4	B	MEDIUM	15	06/02/2006
1	PSV-3123B	224830	N		4	B	MEDIUM	15	07/02/2006
1	PSV-3200A	122363	N		4	D	LOW	21	06/03/2006
1	PSV-3200B	122356 A	N		4	D	LOW	21	06/03/2006
1	PSV-3200S	122356 B	N		4	D	LOW	21	06/03/2006
1	PSV-3201S	LE1124	N		4	D	LOW	21	13/03/2006
1	PSV-3212	124673	N		3	A	HIGH	1	18/01/2001
1	PSV-3213	124674	N		4	D	LOW	21	07/03/2006
1	PSV-3215	124675	N		4	B	MEDIUM	15	03/02/2006
1	PSV-3315	124676	N		4	B	MEDIUM	15	08/03/2006
1	PSV-3316	124677	N		4	C	MEDIUM	18	08/03/2006
1	PSV-3319	329027	N		4	B	MEDIUM	15	09/03/2006
1	PSV-3320	821327	N		4	B	MEDIUM	15	18/03/2006
1	PSV-3501	PSV-3501	N		4	B	MEDIUM	15	07/03/2006

<i>Plant</i>	<i>Location ID</i>	<i>Device ID</i>	<i>Protected by Rupture Disc</i>	<i>Rupture Disk ID</i>	<i>Probability Category</i>	<i>Consequence Category</i>	<i>Criticality Rating</i>	<i>Inspection Priority</i>	<i>Last Inspection Date</i>
1	PSV-3505	224001	N		4	B	MEDIUM	15	07/03/2006
1	PSV-3507	124681 A	N		4	B	MEDIUM	15	07/03/2006
1	PSV-3512	124681 B	N		4	B	MEDIUM	15	07/03/2006
1	PSV-3520	124682	N		4	C	MEDIUM	18	08/03/2006
1	PSV-3524	124683	N		4	B	MEDIUM	15	07/03/2006
1	PSV-3601	124684	N		4	B	MEDIUM	15	16/03/2006
1	PSV-3602A	PSV-3602A	N		4	A	MEDIUM HIGH	10	08/03/2006
1	PSV-3602S	621461 B	N		4	A	MEDIUM HIGH	10	16/03/2006
1	PSV-3703	124685	N		4	B	MEDIUM	15	18/03/2006
1	PSV-3704A	621462 A	N		4	B	MEDIUM	15	17/03/2006
1	PSV-3704S	621462 B	N		4	B	MEDIUM	15	17/03/2006
1	PSV-3804	124686	N		4	B	MEDIUM	15	17/01/2008
1	PSV-3805	124687	N		4	B	MEDIUM	15	18/03/2006
1	PSV-3810	329617	N		4	B	MEDIUM	15	08/03/2006
1	PSV-3811	124688	N		4	B	MEDIUM	15	08/03/2006
1	PSV-3812	124689	N		4	B	MEDIUM	15	08/03/2006
1	PSV-3906	124691	N		4	E	LOW	23	07/03/2006
1	PSV-3907	124692	N		4	E	LOW	23	08/03/2006
1	PSV-3929	C98230	N		4	D	LOW	21	07/03/2006
1	PSV-3930	C98231	N		4	D	LOW	21	07/03/2006
1	PSV-3941	C-99860	N		4	C	MEDIUM	18	09/03/2006
1	PSV-4	VAF253110	N		4	C	MEDIUM	18	09/02/1999
1	PSV-4109	PSV-4109	N		4	B	MEDIUM	15	09/03/2006
1	PSV-4110	124694	N		4	B	MEDIUM	15	15/03/2006
1	PSV-4111	124695	N		4	B	MEDIUM	15	09/03/2006

<i>Plant</i>	<i>Location ID</i>	<i>Device ID</i>	<i>Protected by Rupture Disc</i>	<i>Rupture Disk ID</i>	<i>Probability Category</i>	<i>Consequence Category</i>	<i>Criticality Rating</i>	<i>Inspection Priority</i>	<i>Last Inspection Date</i>
1	PSV-4214	124696	N		4	B	MEDIUM	15	15/03/2006
1	PSV-4216	124697	N		4	B	MEDIUM	15	11/03/2006
1	PSV-4310	PSV-4310	N		4	C	MEDIUM	18	15/03/2006
1	PSV-4320	124699	N		4	B	MEDIUM	15	15/03/2006
1	PSV-4322	PSV-4322	N		4	B	MEDIUM	15	15/03/2006
1	PSV-4502	224002	N		4	B	MEDIUM	15	15/03/2006
1	PSV-4503	124702	N		4	B	MEDIUM	15	10/03/2006
1	PSV-4521	322084	N		4	B	MEDIUM	15	09/03/2006
1	PSV-4608	PSV-4608	N		4	B	MEDIUM	15	10/03/2006
1	PSV-4614	124704	N		3	A	HIGH	1	23/06/1997
1	PSV-4615	124705	N		4	B	MEDIUM	15	02/05/2005
1	PSV-4721	PSV-4721	N		4	B	MEDIUM	15	16/03/2006
1	PSV-4726	PSV-4726	N		4	B	MEDIUM	15	15/03/2006
1	PSV-4901	R00225	N		4	A	MEDIUM HIGH	10	10/03/2006
1	PSV-4902	R00226	N		4	A	MEDIUM HIGH	10	09/03/2006
1	PSV-4903	R00227	N		4	A	MEDIUM HIGH	10	09/03/2006
1	PSV-4904	R00228	N		4	A	MEDIUM HIGH	10	10/03/2006
1	PSV-4970	R00229	N		4	B	MEDIUM	15	10/03/2006
1	PSV-5111	124708 A	N		4	A	MEDIUM HIGH	10	22/12/2005
1	PSV-5112	127408 B	N		4	A	MEDIUM HIGH	10	12/03/2006
1	PSV-5113	329626	N		4	A	MEDIUM HIGH	10	16/03/2006
1	PSV-5311A	329662-1	N		4	B	MEDIUM	15	06/01/2001
1	PSV-5311B	329621	N		4	B	MEDIUM	15	01/01/2001
1	PSV-5311C	329662-2	N		4	B	MEDIUM	15	06/01/2001
1	PSV-5312	124713	N		4	A	MEDIUM HIGH	10	16/03/2006

<i>Plant</i>	<i>Location ID</i>	<i>Device ID</i>	<i>Protected by Rupture Disc</i>	<i>Rupture Disk ID</i>	<i>Probability Category</i>	<i>Consequence Category</i>	<i>Criticality Rating</i>	<i>Inspection Priority</i>	<i>Last Inspection Date</i>
1	PSV-5402	124714	N		4	B	MEDIUM	15	16/03/2006
1	PSV-5403	329615	N		4	B	MEDIUM	15	18/03/2006
1	PSV-5407	124716	N		4	B	MEDIUM	15	18/03/2006
1	PSV-5411	124717	N		4	B	MEDIUM	15	16/03/2006
1	PSV-6102	124718	N		4	B	MEDIUM	15	11/03/2006
1	PSV-6104	124710	N		3	A	HIGH	1	10/03/2006
1	PSV-6105	124720	N		4	B	MEDIUM	15	09/03/2006
1	PSV-6109	124721	N		4	B	MEDIUM	15	14/03/2006
1	PSV-6211	124722	N		4	B	MEDIUM	15	18/03/2006
1	PSV-6304	124723	N		4	B	MEDIUM	15	11/03/2006
1	PSV-6309	124724	N		4	B	MEDIUM	15	09/03/2006
1	PSV-6311	124825	N		4	B	MEDIUM	15	10/03/2006
1	PSV-6315	124726	N		4	B	MEDIUM	15	11/03/2006
1	PSV-6316	124727	N		4	B	MEDIUM	15	13/03/2006
1	PSV-6317	124728	N		4	B	MEDIUM	15	13/03/2006
1	PSV-6403	124729	N		4	B	MEDIUM	15	11/03/2006
1	PSV-6405	124730	N		4	B	MEDIUM	15	07/03/2006
1	PSV-6406	124732-1	N		4	A	MEDIUM HIGH	10	31/12/2000
1	PSV-6501	124732-2	N		4	B	MEDIUM	15	11/03/2006
1	PSV-6503	124733	N		4	B	MEDIUM	15	11/03/2006
1	PSV-6611	124734	N		4	B	MEDIUM	15	08/09/2005
1	PSV-6614	224005	N		4	A	MEDIUM HIGH	10	15/03/2006
1	PSV-6714	C98232	N		4	C	MEDIUM	18	08/03/2006
1	PSV-6715	C98233	N		4	C	MEDIUM	18	07/03/2006
1	PSV-6720	C99861	N		4	C	MEDIUM	18	09/03/2006

<i>Plant</i>	<i>Location ID</i>	<i>Device ID</i>	<i>Protected by Rupture Disc</i>	<i>Rupture Disk ID</i>	<i>Probability Category</i>	<i>Consequence Category</i>	<i>Criticality Rating</i>	<i>Inspection Priority</i>	<i>Last Inspection Date</i>
1	PSV-6721	C99841	N		4	C	MEDIUM	18	07/03/2006
1	PSV-6722	C99842	N		4	C	MEDIUM	18	07/03/2006
1	PSV-6805	124736	N		4	E	LOW	23	17/03/2006
1	PSV-7102	124737	N		4	B	MEDIUM	15	10/03/2006
1	PSV-7103	124738	N		4	A	MEDIUM HIGH	10	03/11/2004
1	PSV-7104	124739	N		4	B	MEDIUM	15	03/11/2004
1	PSV-7105	124740	N		4	A	MEDIUM HIGH	10	03/11/2004
1	PSV-7106	124741	N		4	A	MEDIUM HIGH	10	11/03/2006
1	PSV-7207	124742	N		4	B	MEDIUM	15	07/03/2006
1	PSV-7214A	124743-B	N		4	B	MEDIUM	15	11/07/1997
1	PSV-7214S	124743-A	N		4	B	MEDIUM	15	04/01/2006
1	PSV-7215	124826	N		4	B	MEDIUM	15	12/10/2005
1	PSV-7216	124745	N		4	B	MEDIUM	15	03/01/2006
1	PSV-7217	124746	N		4	B	MEDIUM	15	07/03/2006
1	PSV-7218	124747	N		4	B	MEDIUM	15	07/03/2006
1	PSV-7223	124748	N		4	B	MEDIUM	15	22/02/2008
1	PSV-7226	124749	N		4	B	MEDIUM	15	22/02/2008
1	PSV-7302	124750	N		4	B	MEDIUM	15	10/03/2006
1	PSV-7311	124751	N		4	D	LOW	21	08/03/2006
1	PSV-8027	124754	N		4	B	MEDIUM	15	08/03/2006
1	PSV-8028	124755	N		4	B	MEDIUM	15	08/03/2006
1	PSV-8044	124756	N		4	B	MEDIUM	15	08/03/2006
1	PSV-8091	124757	N		4	E	LOW	23	09/03/2006
1	PSV-8092A	124758 A	N		4	E	LOW	23	09/03/2006
1	PSV-8092B	124758 B	N		4	E	LOW	23	09/03/2006

<i>Plant</i>	<i>Location ID</i>	<i>Device ID</i>	<i>Protected by Rupture Disc</i>	<i>Rupture Disk ID</i>	<i>Probability Category</i>	<i>Consequence Category</i>	<i>Criticality Rating</i>	<i>Inspection Priority</i>	<i>Last Inspection Date</i>
1	PSV-8092C	124758 C	N		4	E	LOW	23	09/03/2006
1	PSV-8093A	124775-2	N		4	E	LOW	23	09/03/2006
1	PSV-8093B	124759 B	N		4	E	LOW	23	09/03/2006
1	PSV-8093C	124759 C	N		4	E	LOW	23	09/03/2006
1	PSV-8101	124762	N		4	E	LOW	23	08/03/2006
1	PSV-8102	124763	N		4	E	LOW	23	09/03/2006
1	PSV-8124	124760	N		4	C	MEDIUM	18	09/03/2006
1	PSV-8125	124761	N		4	C	MEDIUM	18	02/03/2006
1	PSV-8161	124764	N		4	B	MEDIUM	15	09/03/2006
1	PSV-8162	124765	N		4	E	LOW	23	02/11/2006
1	PSV-8163	124766	N		4	E	LOW	23	12/02/2008
1	PSV-8241A	91FY149-1	N		4	C	MEDIUM	18	08/05/2007
1	PSV-8241B	91FY149-2	N		4	E	LOW	23	10/10/2006
1	PSV-8241C	PSV-8241C	N		4	C	MEDIUM	18	10/08/2007
1	PSV-8241D	PSV-8241D	N		4	C	MEDIUM	18	20/02/2004
1	PSV-8241E	BY69818	N		4	C	MEDIUM	18	24/06/2005
1	PSV-8242A	91FY150-1	N		4	C	MEDIUM	18	17/07/2006
1	PSV-8242B	91FY150-2	N		4	E	LOW	23	10/10/2007
1	PSV-8242C	PSV-8242C	N		4	C	MEDIUM	18	23/10/2003
1	PSV-8242D	PSV-8242D	N		4	C	MEDIUM	18	19/02/2004
1	PSV-8242E	PSV-8242E	N		4	C	MEDIUM	18	24/06/2005
1	PSV-8243A	93F7166	N		4	E	LOW	23	08/05/2007
1	PSV-8243B	91FY151-2	N		4	E	LOW	23	13/10/2006
1	PSV-8243C	PSV-8243C	N		4	E	LOW	23	08/08/2007
1	PSV-8243D	PSV-8243D	N		3	E	LOW	20	20/02/2004

<i>Plant</i>	<i>Location ID</i>	<i>Device ID</i>	<i>Protected by Rupture Disc</i>	<i>Rupture Disk ID</i>	<i>Probability Category</i>	<i>Consequence Category</i>	<i>Criticality Rating</i>	<i>Inspection Priority</i>	<i>Last Inspection Date</i>
1	PSV-8243E	PSV-8243E	N		3	E	LOW	20	24/06/2005
1	PSV-8261	124767	N		4	E	LOW	23	10/01/2006
1	PSV-8262	124768	N		4	E	LOW	23	10/01/2006
1	PSV-8281A	113381	N		4	C	MEDIUM	18	16/01/2006
1	PSV-8281S	113380	N		4	C	MEDIUM	18	16/01/2006
1	PSV-8283	DM793	N		4	E	LOW	23	16/01/2006
1	PSV-8285	SE1193	N		4	D	LOW	21	16/01/2006
1	PSV-8285D	113390	N		4	E	LOW	23	16/01/2006
1	PSV-8286	QG1216	N		4	D	LOW	21	16/01/2006
1	PSV-8296	PSV-8296	N		2	E	MEDIUM	16	15/01/2001
1	PSV-8448A	124769A	N		4	E	LOW	23	30/03/2008
1	PSV-8448B	124769B	N		4	E	LOW	23	06/03/2006
1	PSV-8449	124770	N		4	E	LOW	23	06/03/2006
1	PSV-8465	124771	N		4	E	LOW	23	06/03/2006
1	PSV-8487	124772	N		4	E	LOW	23	06/03/2006
1	PSV-8488	PSV-8488	N		4	E	LOW	23	06/03/2006
1	PSV-9041	PSV-9041	N		3	E	LOW	20	01/03/1994
1	PSV-9042	39048	N		2	E	MEDIUM	16	01/11/1995
1	PSV-9043	39049	N		2	E	MEDIUM	16	01/11/1995
1	PSV-9044	53849	N		2	E	MEDIUM	16	02/11/1995
1	PSV-9045	53847	N		2	E	MEDIUM	16	02/11/1995
1	PSV-9046	41089	N		2	E	MEDIUM	16	08/11/1995
1	PSV-9081	39050	N		2	E	MEDIUM	16	07/11/1995
1	PSV-9082	39051	N		2	E	MEDIUM	16	07/11/1995
1	PSV-9083	41090	N		2	E	MEDIUM	16	09/11/1995

<i>Plant</i>	<i>Location ID</i>	<i>Device ID</i>	<i>Protected by Rupture Disc</i>	<i>Rupture Disk ID</i>	<i>Probability Category</i>	<i>Consequence Category</i>	<i>Criticality Rating</i>	<i>Inspection Priority</i>	<i>Last Inspection Date</i>
1	PSV-9161	PSV-9161	N		4	E	LOW	23	18/02/1997
1	PSV-9162	PSV-9162	N		4	E	LOW	23	19/07/2005
1	PSV-9163	57034	N		2	E	MEDIUM	16	16/11/1995
1	PSV-9164	57041	N		2	E	MEDIUM	16	01/03/1994
1	PSV-9165	56853	N		4	E	LOW	23	01/03/2008
1	PSV-9166	97845	N		2	E	MEDIUM	16	01/03/1994
1	PSV-9167	PSV-9167	N		3	E	LOW	20	13/11/1995
1	PSV-9201	124774	N		4	E	LOW	23	10/03/2006
1	PSV-9202	124775	N		4	E	LOW	23	10/03/2006
1	PSV-9301	124776	N		3	E	LOW	20	29/01/1999
1	PSV-9302	124777	N		2	E	MEDIUM	16	01/03/1994
1	PSV-9303	PSV-9303	N		4	B	MEDIUM	15	13/03/2006
1	PSV-9321A	114281A	N		4	E	LOW	23	23/09/2006
1	PSV-9321S	114281B	N		4	E	LOW	23	29/03/2006
1	PSV-9341	95608-1	N		4	E	LOW	23	15/02/2008
1	PSV-9342	95608-2	N		4	E	LOW	23	13/03/2006
1	PSV-9501	PSV-9501	N		4	B	MEDIUM	15	08/01/2001
1	PSV-9502	124780	N		4	B	MEDIUM	15	04/02/1999
1	PSV-9503	124781	N		4	B	MEDIUM	15	15/02/2008
1	PSV-9504	SV-155588	N		4	B	MEDIUM	15	09/11/2006
1	PSV-9505	R06713	N		4	B	MEDIUM	15	10/07/1998
1	PSV-9621A	PSV-9621A	N		4	B	MEDIUM	15	01/03/1994
1	PSV-9621B	124787B	N		4	A	MEDIUM HIGH	10	15/12/2004
1	PSV-9621C	124787C	N		4	A	MEDIUM HIGH	10	12/10/2004
1	PSV-9621D	124787D	N		4	A	MEDIUM HIGH	10	03/03/1999

<i>Plant</i>	<i>Location ID</i>	<i>Device ID</i>	<i>Protected by Rupture Disc</i>	<i>Rupture Disk ID</i>	<i>Probability Category</i>	<i>Consequence Category</i>	<i>Criticality Rating</i>	<i>Inspection Priority</i>	<i>Last Inspection Date</i>
1	PSV-9621E	124787E	N		3	A	MEDIUM HIGH	10	09/02/2008
1	PSV-9622A	124788A	N		3	A	HIGH	1	10/03/1997
1	PSV-9622B	124788B	N		4	A	MEDIUM HIGH	10	18/02/2008
1	PSV-9622C	124788C	N		4	A	MEDIUM HIGH	10	12/10/2004
1	PSV-9622D	124788D	N		4	A	MEDIUM HIGH	10	06/03/2008
1	PSV-9622E	124768E	N		4	A	MEDIUM HIGH	10	12/02/1999
1	PSV-9625A	521563A	N		4	B	MEDIUM	15	20/03/1997
1	PSV-9626A	PSV-9626A	N		3	B	MEDIUM HIGH	9	01/03/1994
1	PSV-9641A	PSV-9641A	N		4	A	MEDIUM HIGH	10	27/07/2005
1	PSV-9641B	124792B	N		4	A	MEDIUM HIGH	10	18/02/2008
1	PSV-9641C	124792C	N		4	A	MEDIUM HIGH	10	12/02/1999
1	PSV-9641D	124792D	N		4	A	MEDIUM HIGH	10	10/02/1999
1	PSV-9641E	424792E	N		4	A	MEDIUM HIGH	10	02/03/2005
1	PSV-9641F	PSV-9641F	N		4	A	MEDIUM HIGH	10	18/02/2008
1	PSV-9642A	PSV-9642A	N		4	A	MEDIUM HIGH	10	26/07/2005
1	PSV-9642B	124793B	N		4	A	MEDIUM HIGH	10	01/04/2005
1	PSV-9642C	124793C	N		4	A	MEDIUM HIGH	10	09/02/1999
1	PSV-9642D	124793D	N		4	A	MEDIUM HIGH	10	11/02/1999
1	PSV-9642E	124793E	N		4	A	MEDIUM HIGH	10	02/03/2005
1	PSV-9642F	PSV-9642F	N		4	A	MEDIUM HIGH	10	14/12/2004
1	PSV-9664A	124794A	N		4	A	MEDIUM HIGH	10	06/02/2006
1	PSV-9664B	124794B	N		4	A	MEDIUM HIGH	10	15/08/2005
1	PSV-9665A	124795A	N		4	A	MEDIUM HIGH	10	06/02/2006
1	PSV-9665B	124795B	N		4	A	MEDIUM HIGH	10	15/08/2005
1	PSV-9821-S	521575	N		1	D	MEDIUM HIGH	7	21/03/2000

<i>Plant</i>	<i>Location ID</i>	<i>Device ID</i>	<i>Protected by Rupture Disc</i>	<i>Rupture Disk ID</i>	<i>Probability Category</i>	<i>Consequence Category</i>	<i>Criticality Rating</i>	<i>Inspection Priority</i>	<i>Last Inspection Date</i>
1	PSV-9822-S	521571	N		3	E	LOW	20	09/01/1998
1	PSV-9823	124808	N		3	E	LOW	20	20/03/2000
1	PSV-9824	124824	N		3	D	MEDIUM	17	21/03/2000
1	PSV-9901	PSV-9901	N		3	E	LOW	20	20/03/2000
1	PSV-9902	114284	N		3	E	LOW	20	20/03/2000

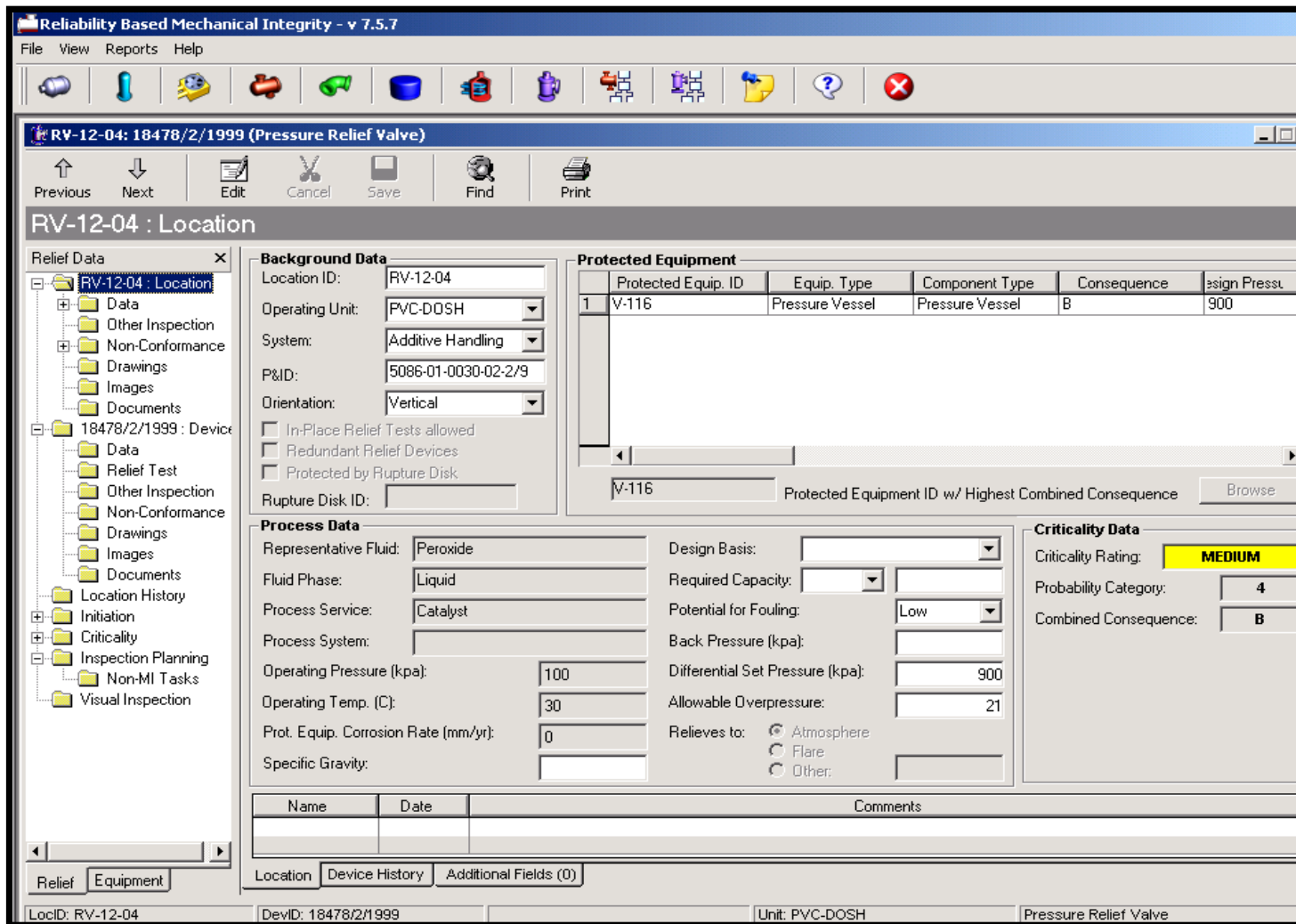
Appendix 2: Risk summary table for relief valves at plant-2.

<i>Plant</i>	<i>Location ID</i>	<i>Device ID</i>	<i>Protected by Rupture Disc</i>	<i>Rupture Disk ID</i>	<i>Probability Category</i>	<i>Consequence Category</i>	<i>Criticality Rating</i>	<i>Inspection Priority</i>	<i>Last Inspection Date</i>
2	BV-101	125219	N		4	A	MEDIUM HIGH	10	01/06/1994
2	BV-201	BV-201	N		4	A	MEDIUM HIGH	10	01/06/1994
2	K-701	K-701	N		4	E	LOW	23	14/10/2004
2	PSV-0210A	124782B	N		4	B	MEDIUM	15	22/10/1997
2	PSV-0210B	124783B	N		4	C	MEDIUM	18	22/10/1997
2	PSV-9603	124783A	N		4	C	MEDIUM	18	21/10/1997
2	PSV-9604	SV 155589	N		4	B	MEDIUM	15	06/11/2006
2	PSV-9605	521553 A	N		4	B	MEDIUM	15	21/10/1997

<i>Plant</i>	<i>Location ID</i>	<i>Device ID</i>	<i>Protected by Rupture Disc</i>	<i>Rupture Disk ID</i>	<i>Probability Category</i>	<i>Consequence Category</i>	<i>Criticality Rating</i>	<i>Inspection Priority</i>	<i>Last Inspection Date</i>
2	PSV-9606	521534B	N		4	B	MEDIUM	15	03/12/2006
2	PSV-9607	521553C	N		4	B	MEDIUM	15	03/12/2006
2	PSV-9608	521534A	N		4	B	MEDIUM	15	24/01/2006
2	PSV-9609	521555B	N		3	B	MEDIUM HIGH	9	22/11/1995
2	PSV-9610	124782A	N		4	B	MEDIUM	15	23/01/2006
2	PSV-9623	124385	N		3	B	MEDIUM HIGH	9	29/06/1993
2	PSV-9624	124386	N		4	B	MEDIUM	15	17/07/2000
2	PSV-9643	124789	N		4	B	MEDIUM	15	31/03/1998
2	PSV-9644	124790	N		4	B	MEDIUM	15	27/08/2004
2	PSV-9645	124791	N		4	B	MEDIUM	15	09/02/1999
2	PSV-9668	124795	N		4	B	MEDIUM	15	09/02/1999
2	PSV-9681	521532	N		4	C	MEDIUM	18	22/11/1995
2	PSV-9682	521554	N		4	C	MEDIUM	18	22/10/1997
2	PSV-9683	124799	N		4	B	MEDIUM	15	22/10/1997
2	PSV-9684	124800	N		3	A	HIGH	1	16/01/1996
2	PSV-9686	124797	N		4	C	MEDIUM	18	21/10/1997
2	PSV-9687	124798	N		4	C	MEDIUM	18	21/10/1997
2	PSV-9701	124801	N		4	C	MEDIUM	18	13/03/2006
2	PSV-9721	124802	N		4	D	LOW	21	13/03/2006
2	PSV-9801	124803A	N		3	C	MEDIUM	14	19/09/1995
2	PSV-9802	VV3918	N		3	B	MEDIUM HIGH	9	14/10/2004
2	PSV-9803	124803	N		3	B	MEDIUM HIGH	9	01/06/1994
2	PSV-9804	PSV-9804	N		3	B	MEDIUM HIGH	9	19/09/1995
2	PSV-9805	PSV-9802	N		4	C	MEDIUM	18	17/02/2005
2	PSV-9806	124804	N		4	B	MEDIUM	15	10/06/1998

<i>Plant</i>	<i>Location ID</i>	<i>Device ID</i>	<i>Protected by Rupture Disc</i>	<i>Rupture Disk ID</i>	<i>Probability Category</i>	<i>Consequence Category</i>	<i>Criticality Rating</i>	<i>Inspection Priority</i>	<i>Last Inspection Date</i>
2	PSV-9807	124805	N		4	C	MEDIUM	18	10/07/1998
2	PSV-9861	124810	N		3	C	MEDIUM	14	25/01/1995
2	RV-007	91FY045	N		4	B	MEDIUM	15	30/01/1999
2	RV-029	91FY046	N		4	B	MEDIUM	15	30/01/1999
2	RV-047	91FY047-1	N		4	B	MEDIUM	15	20/01/1999
2	RV-103B	91FY047-2	N		4	B	MEDIUM	15	30/01/1999
2	RV-104	91FY019	N		4	B	MEDIUM	15	07/02/1999
2	RV-105	91FY049	N		4	B	MEDIUM	15	07/02/1999
2	RV-106A	91FY050-1	N		4	B	MEDIUM	15	30/01/1999
2	RV-106B	91FY050-2	N		4	B	MEDIUM	15	30/01/1999
2	RV-106C	91FY050-3	N		4	B	MEDIUM	15	30/01/1999
2	RV-201	90FX331	N		4	B	MEDIUM	15	30/01/1999
2	RV-202	90FX332	N		4	B	MEDIUM	15	30/01/1999
2	RV-203	90FX333-1	N		4	B	MEDIUM	15	29/01/2005
2	RV-1101	90FX334	N		4	B	MEDIUM	15	29/01/2005
2	RV-1204	90FX335	N		4	B	MEDIUM	15	29/01/2005
2	RV-1205	90FX336	N		4	B	MEDIUM	15	30/01/1999
2	SV-051	C88079	N		4	B	MEDIUM	15	11/10/2004
2	SV-052	C88080	N		4	B	MEDIUM	15	11/10/2004
2	SV-101A	125218A	N		4	A	MEDIUM HIGH	10	01/06/1994
2	SV-101B	125218B	N		4	A	MEDIUM HIGH	10	01/06/1994
2	SV-102	91FY051	N		4	A	MEDIUM HIGH	10	28/01/1999
2	SV-103	91FY052	N		4	B	MEDIUM	15	21/03/2005
2	SV-104	92FX135	N		4	B	MEDIUM	15	29/01/1999
2	SV-171A	SV-171A	N		4	C	MEDIUM	18	07/02/1999

<i>Plant</i>	<i>Location ID</i>	<i>Device ID</i>	<i>Protected by Rupture Disc</i>	<i>Rupture Disk ID</i>	<i>Probability Category</i>	<i>Consequence Category</i>	<i>Criticality Rating</i>	<i>Inspection Priority</i>	<i>Last Inspection Date</i>
2	SV-171B	SV-171B	N		4	C	MEDIUM	18	08/02/1999
2	SV-172A	SV-172A	N		4	B	MEDIUM	15	07/02/2008
2	SV-172B	SV-172B	N		3	B	MEDIUM HIGH	9	08/02/1999
2	SV-181	SV-181	N		4	E	LOW	23	24/03/2005
2	SV-183	SV-183	N		4	E	LOW	23	22/03/2005
2	SV-184	SV-184	N		4	E	LOW	23	24/03/2005
2	SV-185A	SV-185A	N		4	E	LOW	23	07/02/1999
2	SV-185B	SV-185B	N		4	E	LOW	23	21/03/2005
2	SV-187	111209	N		4	E	LOW	23	22/03/2005
2	SV-188	91FY053	N		4	E	LOW	23	22/03/2005
2	SV-201A	025064A	N		4	A	MEDIUM HIGH	10	01/06/1994
2	SV-201B	025064B	N		4	A	MEDIUM HIGH	10	01/06/1994
2	SV-202	90FX328	N		4	B	MEDIUM	15	29/01/2005
2	SV-203	90FX329	N		4	A	MEDIUM HIGH	10	01/02/2005
2	SV-204	90FX330	N		4	B	MEDIUM	15	22/04/2005
2	SV-271A	SV-271A	N		4	C	MEDIUM	18	29/01/2005
2	SV-271B	SV-271B	N		4	C	MEDIUM	18	02/02/1999
2	SV-272A	SV-272A	N		4	B	MEDIUM	15	29/01/2005
2	SV-272B	SV-272B	N		4	B	MEDIUM	15	02/02/2005
2	SV-401A	91F7564-2	N		4	E	LOW	23	29/01/2005
2	SV-401B	91F7564-1	N		4	E	LOW	23	02/02/2005
2	SV-402A	91FY054	N		2	E	MEDIUM	16	01/06/1994
2	SV-402B	SV-402B	N		3	E	LOW	20	01/06/1994



Appendix 3: Overview of RBMI Software for Critical Analysis of Relief valve.

Reliability Based Mechanical Integrity - v 7.5.7

File View Reports Help

RV-12-04: 18478/2/1999 (Pressure Relief Valve)

Previous Next Edit Save Cancel Delete Run Print

25/03/2006 MEDIUM

Relief Data

- RV-12-04 : Location
 - Data
 - Other Inspection
 - Non-Conformance
 - Drawings
 - Images
 - Documents
- 18478/2/1999 : Device
 - Data
 - Relief Test
 - Other Inspection
 - Non-Conformance
 - Drawings
 - Images
 - Documents
 - Location History
 - Initiation
 - Criticality
 - 07/03/2006 MEDIUM
 - 25/03/2006 MEDIUM
 - Inspection Planning
 - Non-MI Tasks
 - Visual Inspection

Criticality Rating: **MEDIUM**

Inspection Priority Categories

		E D C B A				
1	11	7	4	2	1	
2	16	13	8	6	3	
3	20	17	14	9	5	
4	23	21	18	15	10	
5	25	24	22	19	12	

Analysis Date: 25/03/2006

Driving Risk

What If Analysis?

Effective Risk Date: 25/03/2006

Performed By: _____

Consequence Categories

Protected Equip. ID w/Highest Comb. Conseq.: V-116

Protected Equipment Type: Pressure Vessel

Protected Equipment Component Type: Pressure Vessel

Combined Consequence: B

Probability Categories

Inspection Priority Category: **15**

Probability Category: 4

Adjusted Deterioration Potential: 17.8446

Deterioration Factor: 5.3534

Comments

Final Risk Run.

Relief Equipment

Criticality Probability Consequence Projections

LocID: RV-12-04 DevID: 18478/2/1999 Unit: PVC-DOSH Pressure Relief Valve

Appendix 4 : Overview of RBMI Software for Data Location of Relief valve

Reliability Based Mechanical Integrity - v 7.5.7

File View Reports Help

RV-12-04: 18478/2/1999 (Pressure Relief Valve)

Previous Next Edit Save Cancel Delete Run Print

25/03/2006 MEDIUM

Relief Data

- RV-12-04 : Location
 - Data
 - Other Inspection
 - Non-Conformance
 - Drawings
 - Images
 - Documents
- 18478/2/1999 : Device
 - Data
 - Relief Test
 - Other Inspection
 - Non-Conformance
 - Drawings
 - Images
 - Documents
 - Location History
- Initiation
- Criticality
 - 07/03/2006 MEDIUM
 - 25/03/2006 MEDIUM
- Inspection Planning
 - Non-MI Tasks
 - Visual Inspection

Probability Categories

Transition Date:	Time to transition (yr):	Criticality Rating:	Inspection Priority Category:	Probability Category:
28/11/2011	8.8	HIGH	2	1
28/11/2006	3.8	MEDIUM HIGH	9	3
		N/A	N/A	N/A

NOTE: Projections are based on the Last Relief Test/Repair Date.

Relief Equipment Criticality Probability Consequence Projections

LocID: RV-12-04 DevID: 18478/2/1999 Unit: PVC-DOSH Pressure Relief Valve

Appendix 5: Overview of RBMI Software for Probability of Failures for Risk Analysis of Relief valve