

## APPENDIX I

### Gantt Chart

Gantt chart for Semester 1

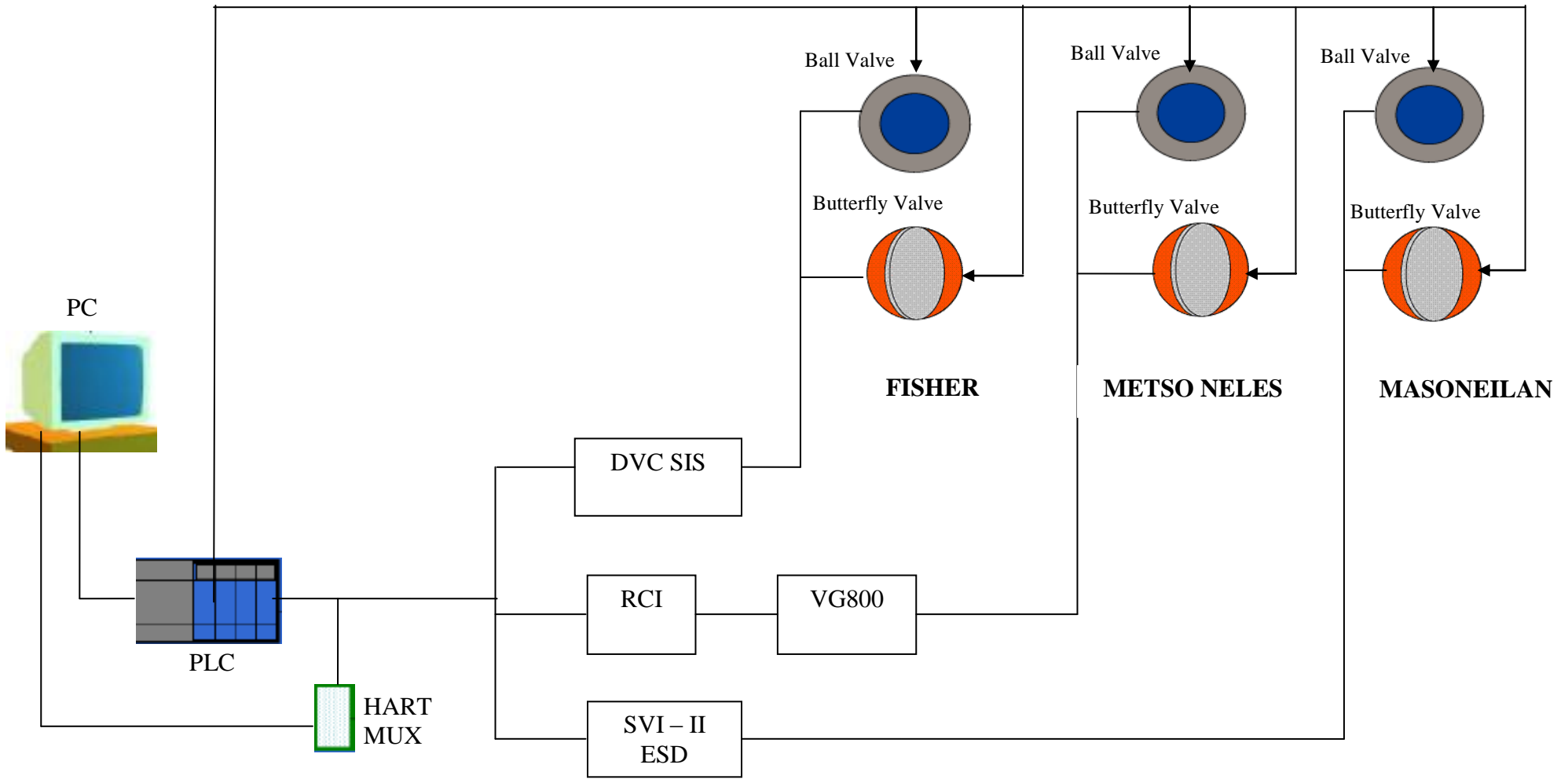
No	Activities / Week	1	2	3	4	5	6	7	8	9	10	11	12	13	14
1	Selection of Project Topic														
2	Data Gathering on Topic														
3	Submission of Preliminary Report														
4	Testing procedures and requirement identification														
5	Conduct testing (FST and PST)														
6	Submission of Progress Report														
7	Seminar														
8	Results Gathering														
9	Submission of Interim Report														
10	Oral Presentation														

Gantt chart for Semester 2

No	Activities / Week	1	2	3	4	5	6	7	8	9	10	11	12	13	14
1	Planning for Semester 2 – any Improvement or additional testing														
2	Continue testing (FST and PST)														
6	Results Gathering & Discussion														
7	Submission of Progress Report 2														
8	Seminar														
9	Conclusion and Recommendation														
10	Poster Exhibition														
11	Submission of Dissertation (Draft)														
12	Oral Presentation														
13	Submission of Dissertation (softbound)														



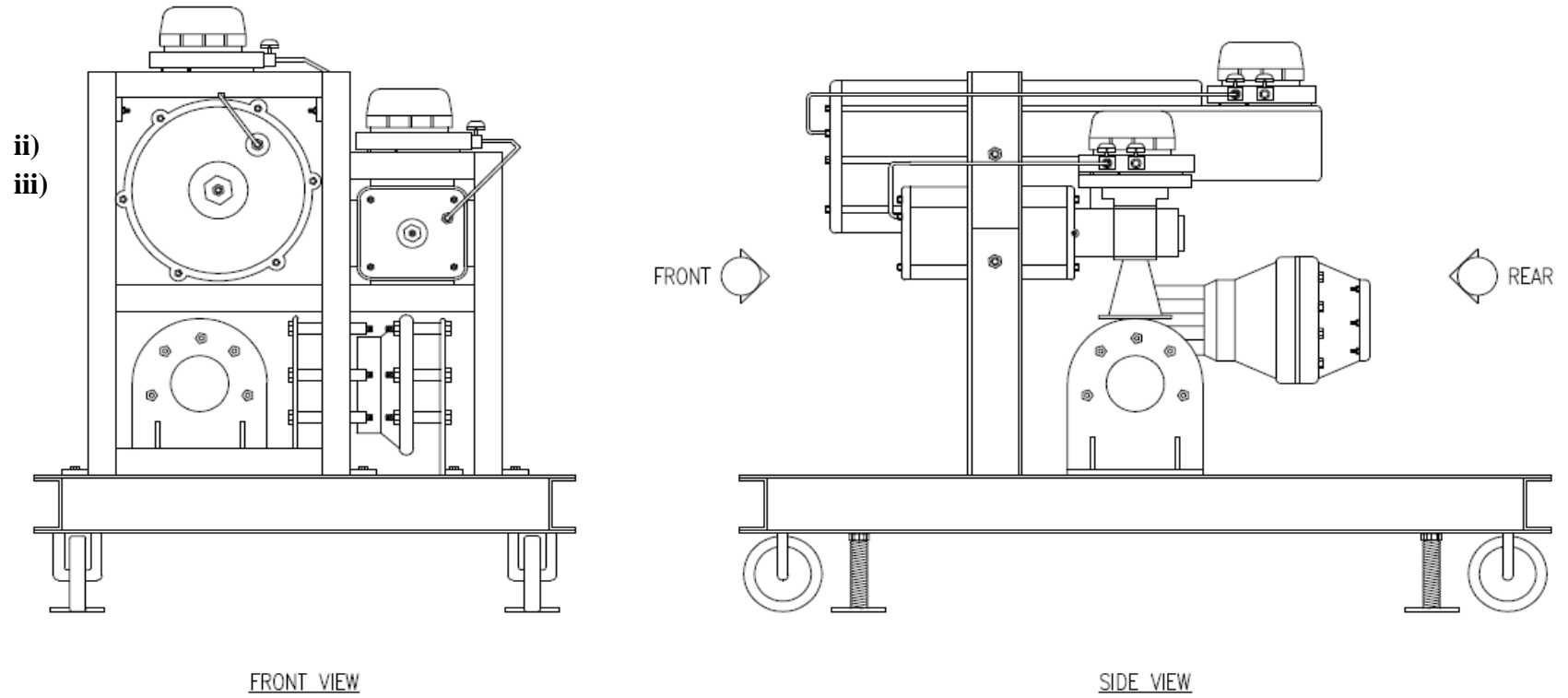
**APPENDIX II**  
**Project Layout**



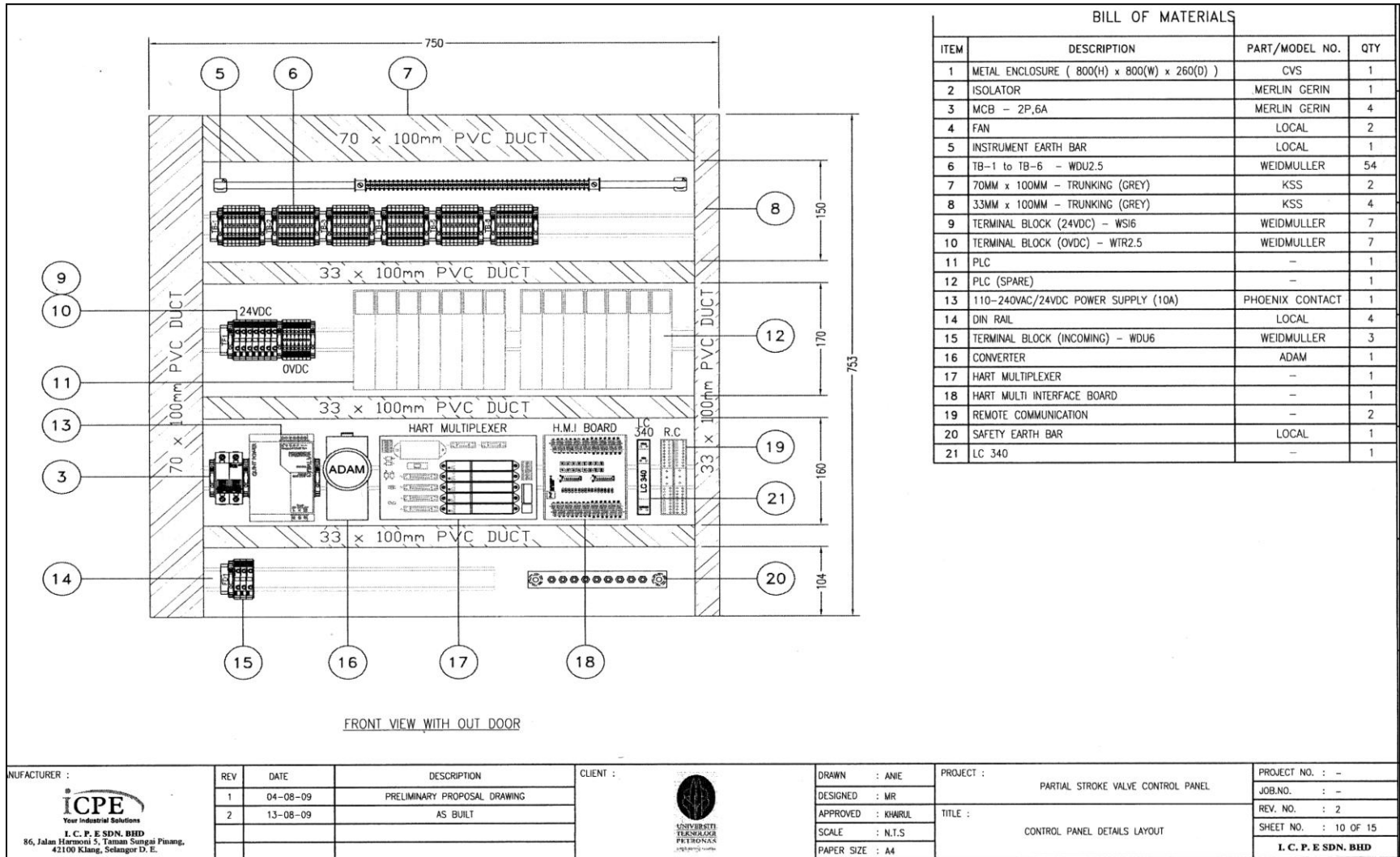


**APPENDIX III**  
**Loop Drawing**

**i) External Skid Trolley Layout – Metso Neles ESD Valve**



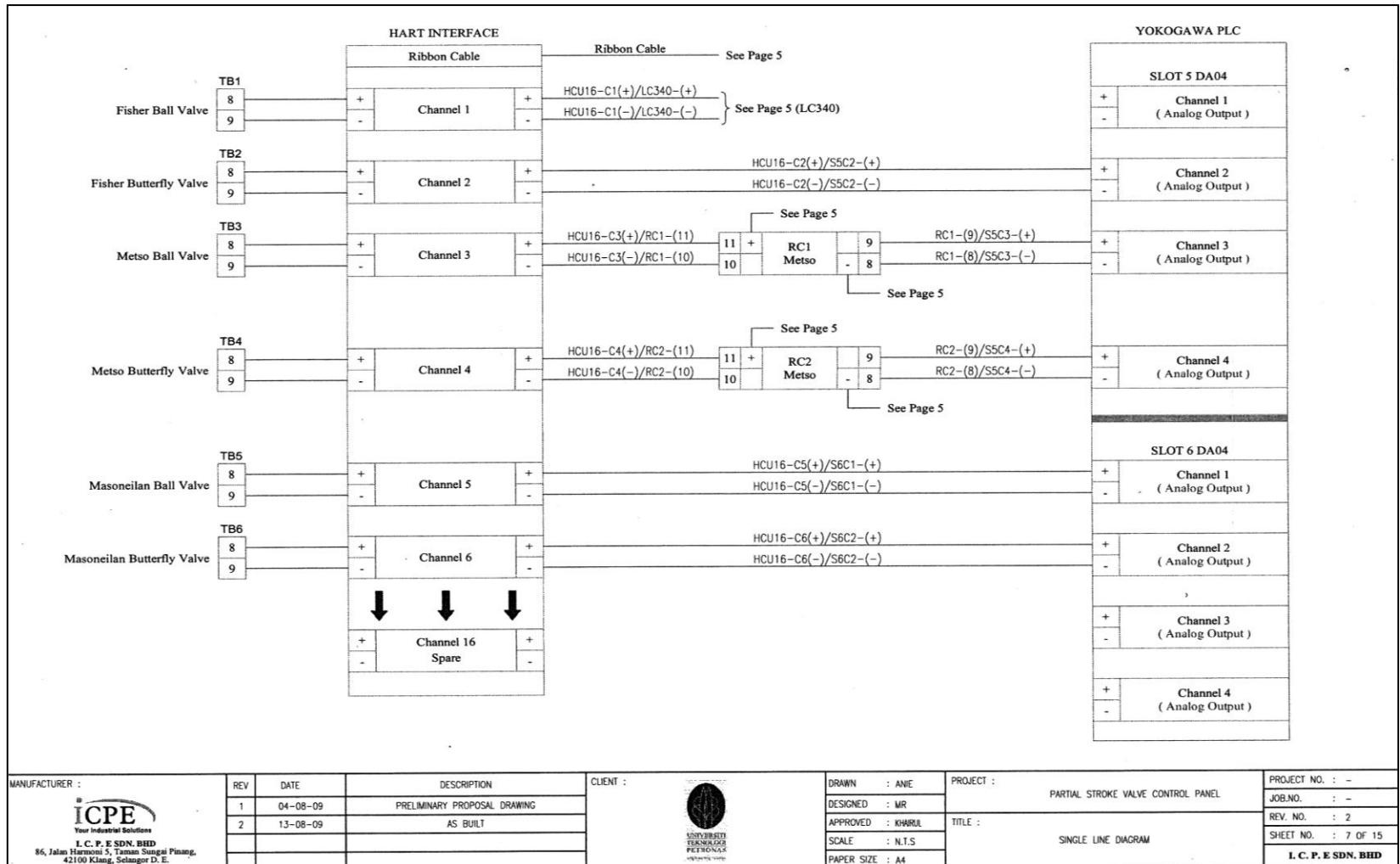
ii) Partial Stroke Valve Control Panel Layout



BILL OF MATERIALS			
ITEM	DESCRIPTION	PART/MODEL NO.	QTY
1	METAL ENCLOSURE ( 800(H) x 800(W) x 260(D) )	CVS	1
2	ISOLATOR	MERLIN GERIN	1
3	MCB - 2P,6A	MERLIN GERIN	4
4	FAN	LOCAL	2
5	INSTRUMENT EARTH BAR	LOCAL	1
6	TB-1 to TB-6 - WDU2.5	WEIDMULLER	54
7	70MM x 100MM - TRUNKING (GREY)	KSS	2
8	33MM x 100MM - TRUNKING (GREY)	KSS	4
9	TERMINAL BLOCK (24VDC) - WSI6	WEIDMULLER	7
10	TERMINAL BLOCK (OVDC) - WTR2.5	WEIDMULLER	7
11	PLC	-	1
12	PLC (SPARE)	-	1
13	110-240VAC/24VDC POWER SUPPLY (10A)	PHOENIX CONTACT	1
14	DIN RAIL	LOCAL	4
15	TERMINAL BLOCK (INCOMING) - WDU6	WEIDMULLER	3
16	CONVERTER	ADAM	1
17	HART MULTIPLEXER	-	1
18	HART MULTI INTERFACE BOARD	-	1
19	REMOTE COMMUNICATION	-	2
20	SAFETY EARTH BAR	LOCAL	1
21	LC 340	-	1

MANUFACTURER :  I. C. F. E SDN. BHD 86, Jalan Harmoni 5, Taman Sungai Pinang, 42100 Klang, Selangor D. E.	REV	DATE	DESCRIPTION	CLIENT :  UNIVERSITI TEKNOLOGI PETRONAS	DRAWN : ANIE	PROJECT :	PROJECT NO. : -
	1	04-08-09	PRELIMINARY PROPOSAL DRAWING		DESIGNED : MR	PARTIAL STROKE VALVE CONTROL PANEL	JOB.NO. : -
	2	13-08-09	AS BUILT		APPROVED : KHARUL	TITLE :	REV. NO. : 2
					SCALE : N.T.S	CONTROL PANEL DETAILS LAYOUT	SHEET NO. : 10 OF 15
					PAPER SIZE : A4		I. C. F. E SDN. BHD

iii) Single Line Diagram





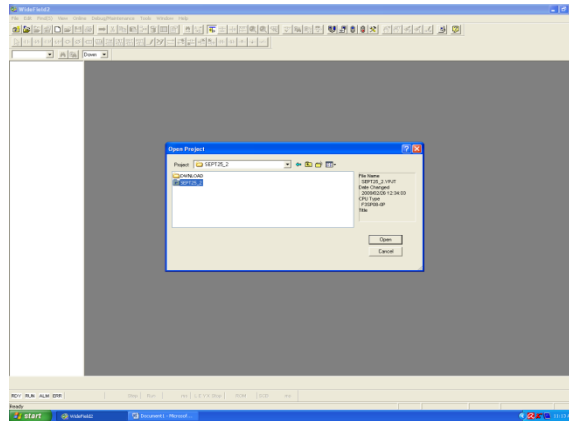


## APPENDIX IV

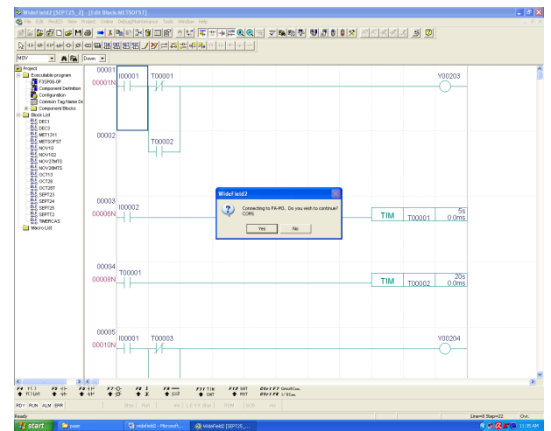
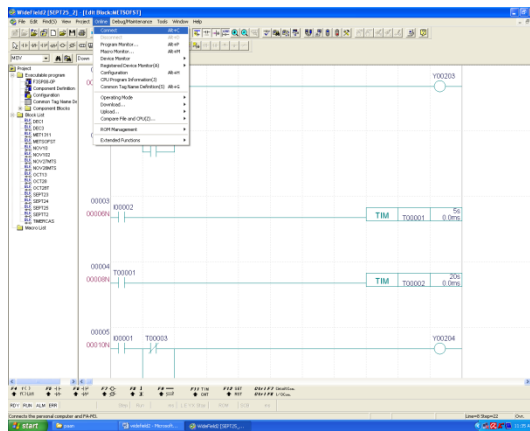
### Testing Procedures for Full Stroke Testing (Widefield2 Software)

Widefield2 software is used for Full Stroke Testing. PLC is used to force the valve to fully open or close.

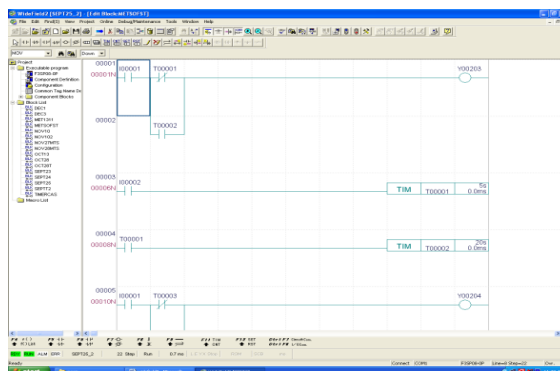
- 1) Open widefield2 software. Open project > SEPT25\_2



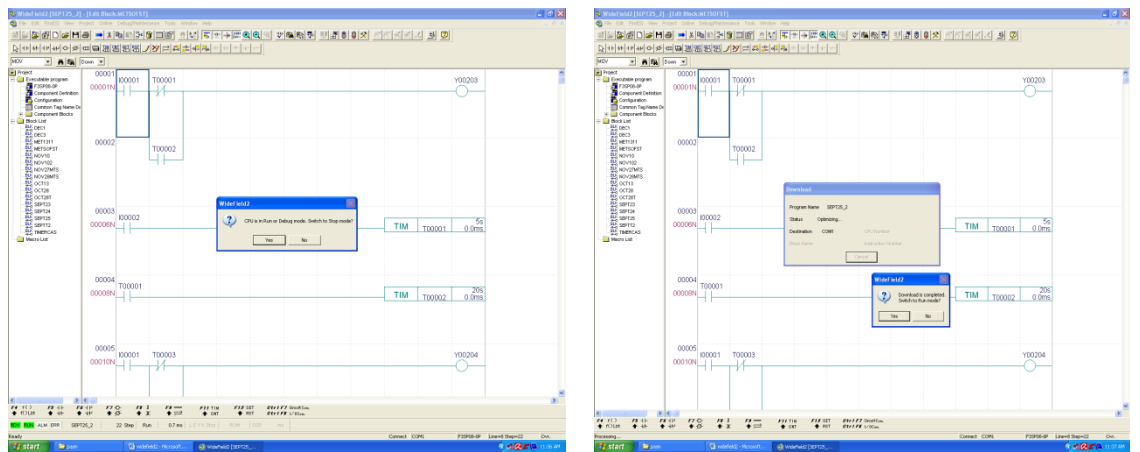
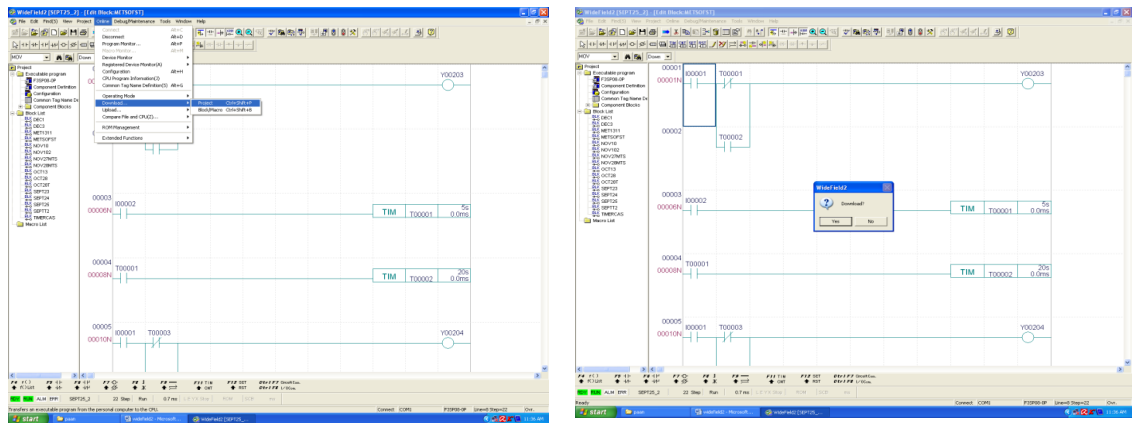
- 2) METSOFT > online > connect



The PLC is on ready and run

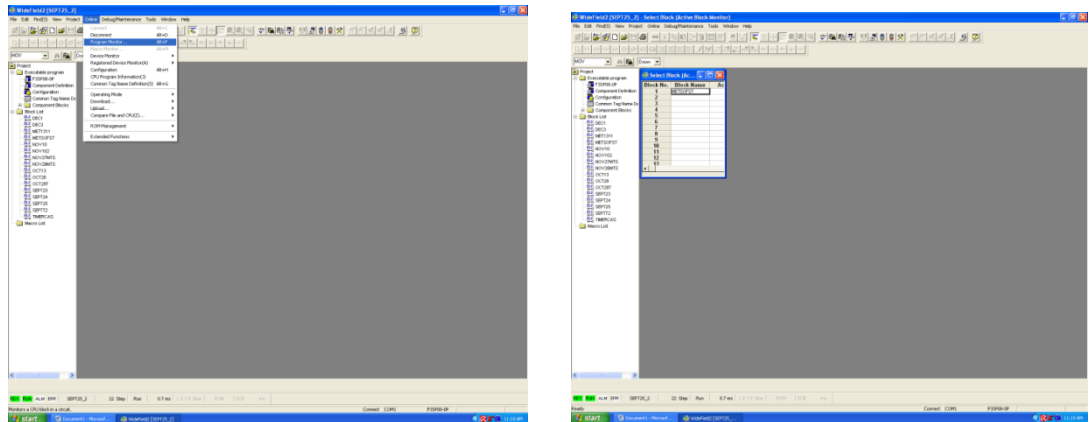


### 3) Download project

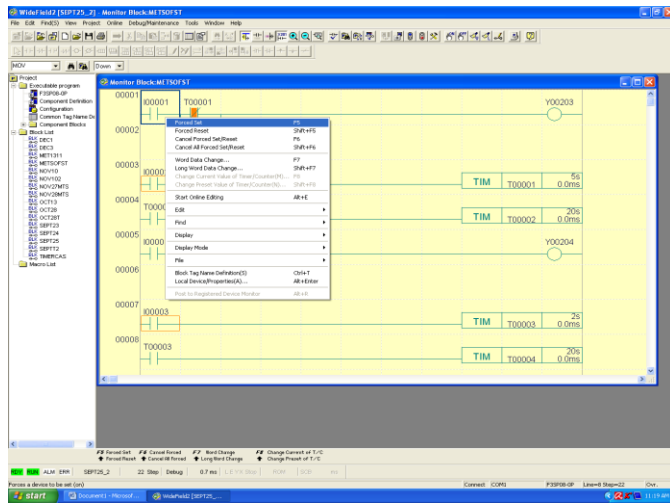


Download is completed and switch to run mode back

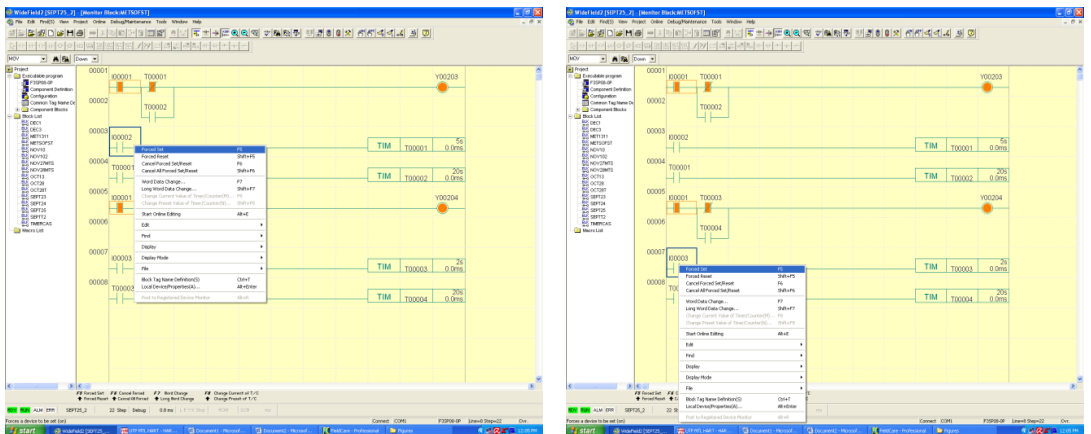
### 4) Program Monitor > to monitor the PLC



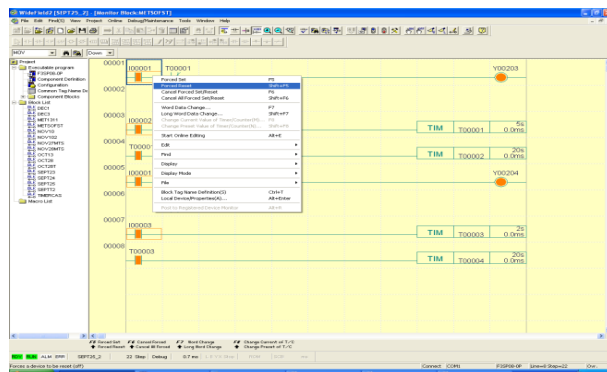
- 5) Forced set the I0001 to fully open the valve. Valve initially in closed position, have to fully open it in order to do the Partial Stroke Testing.



- 6) On the third stroke, PST is conducted at the same time with FST Ball Valve (I0002), Butterfly Valve (I0003)



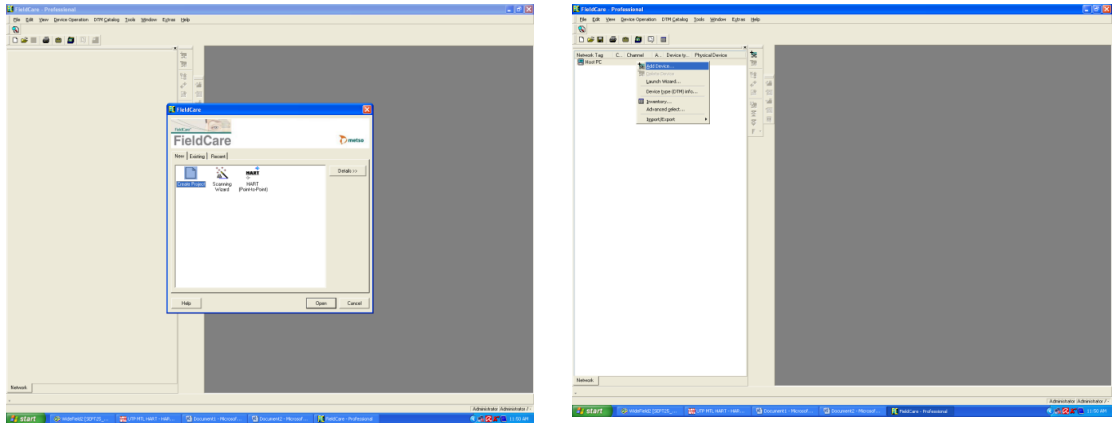
- 7) After testing is done, 'Force Reset' both valves to move the valves to close position.



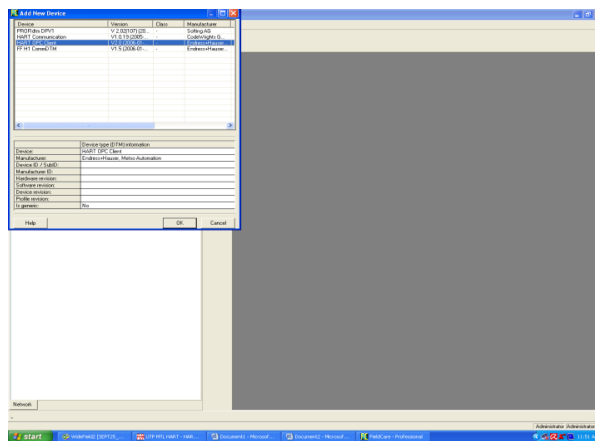
## APPENDIX V

### Testing Procedures for Partial Stroke Testing (FieldCare Software)

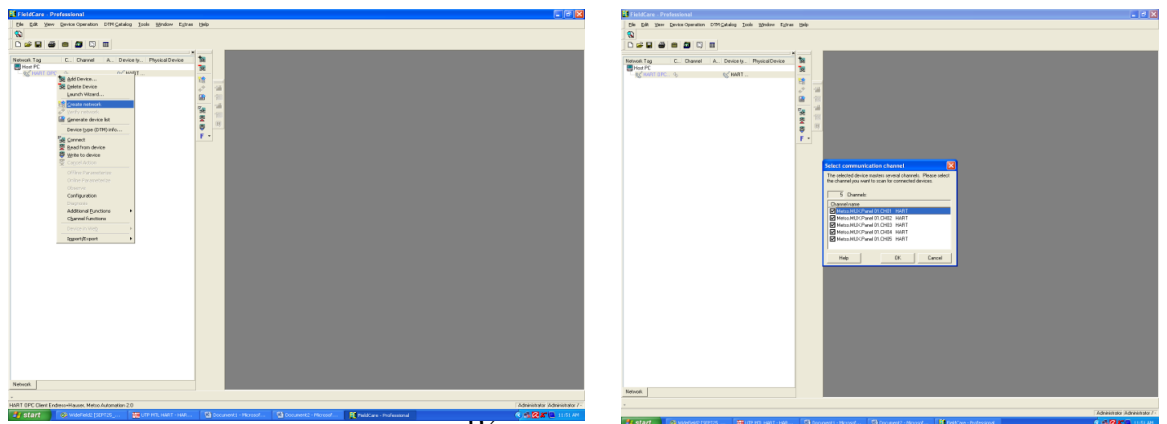
1) Open FieldCare Software > create project



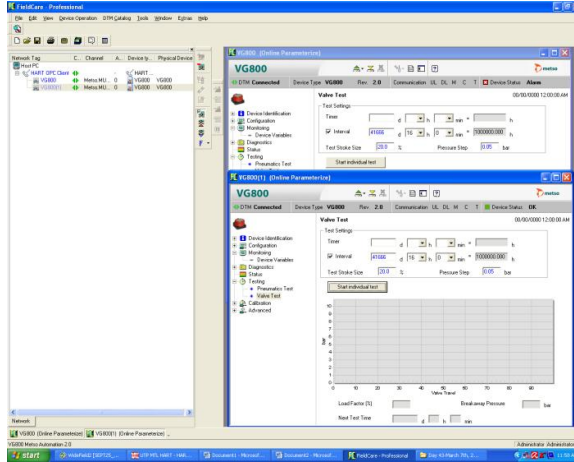
2) Add new device > HART OPC Client



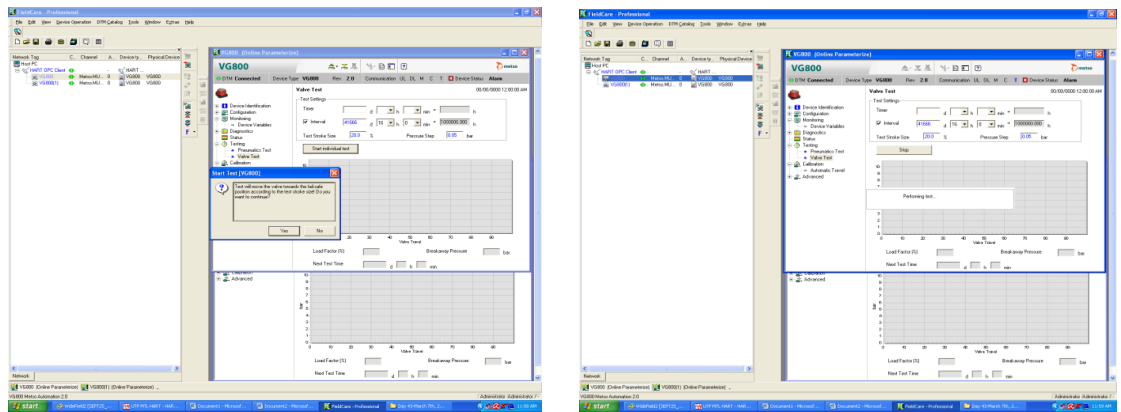
3) Create network



4) Connect both valves: VG800 – Ball Valve, VG800(1) – Butterfly Valve



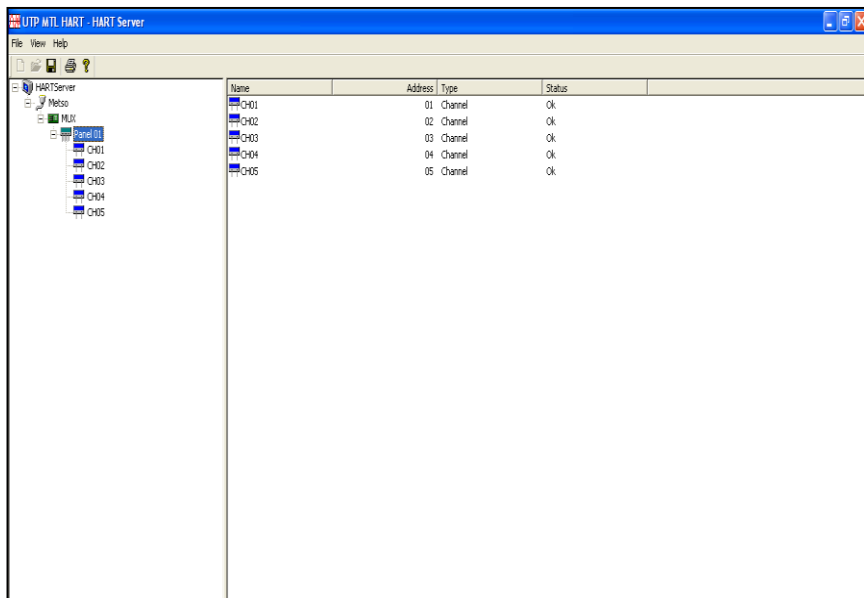
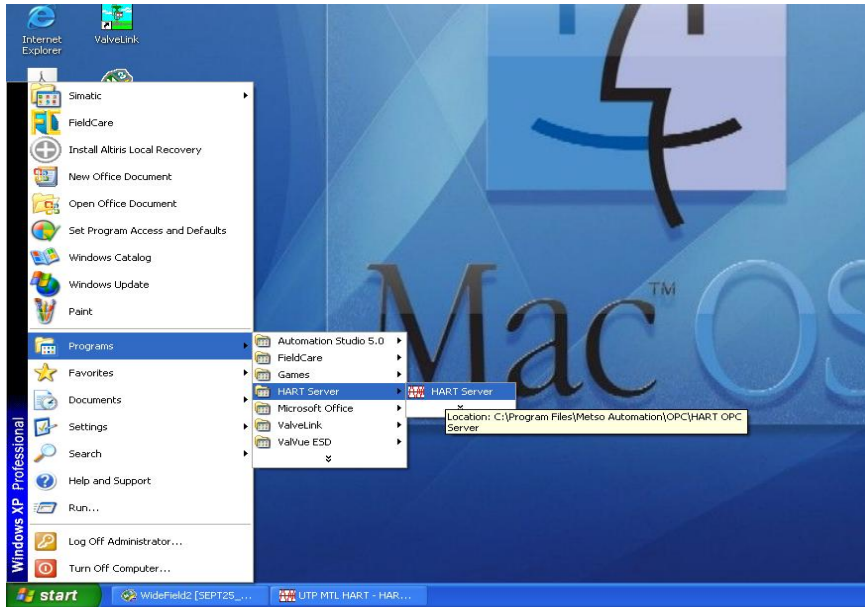
5) Start individual test to start the Pneumatic Tests followed by PST



6) After sixth stroke is done, disconnect both valves at the FieldCare Software

## APPENDIX VI HART Server

- 1) Open the Hart Server: Window >Programs>Hart Server



## APPENDIX VII

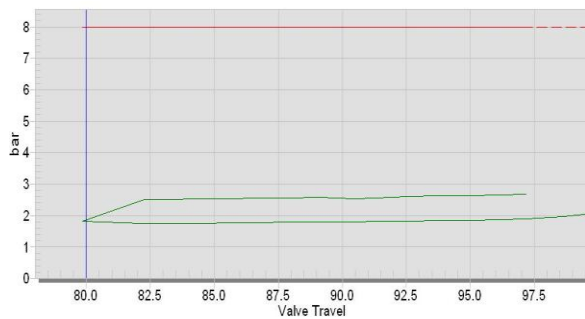
### Test Result for Ball Valve

Sample 1 : Day 1

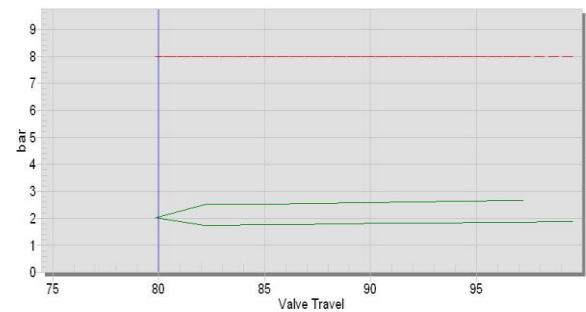
Test Date : December 22<sup>nd</sup> , 2008

Time : 10.20am – 11.35 am

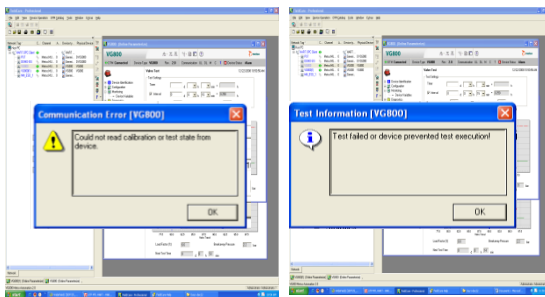
First Stroke:



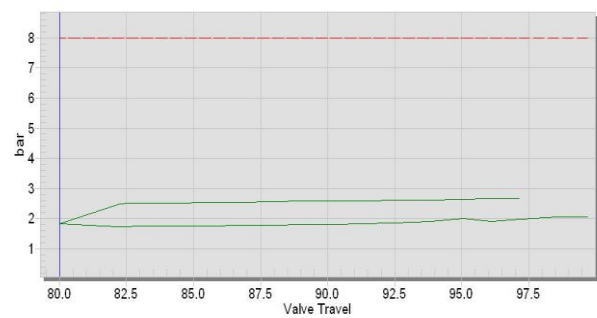
Second Stroke:



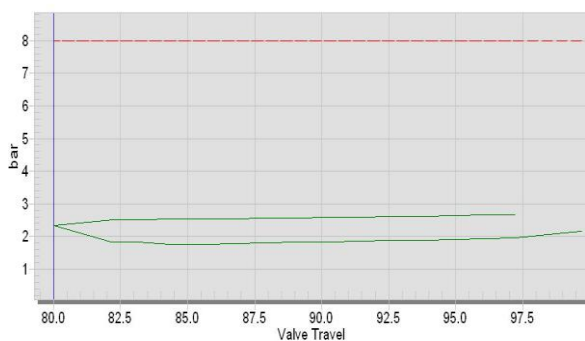
Third Stroke – PST + FST:



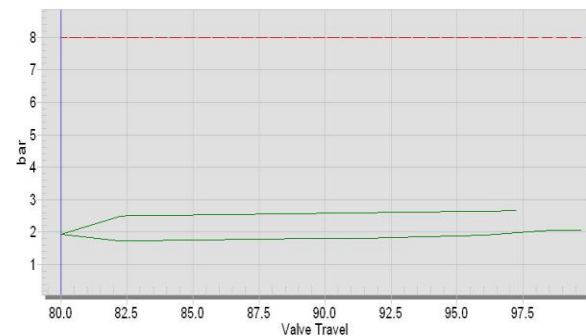
Forth Stroke:



Fifth Stroke:



Sixth Stroke:

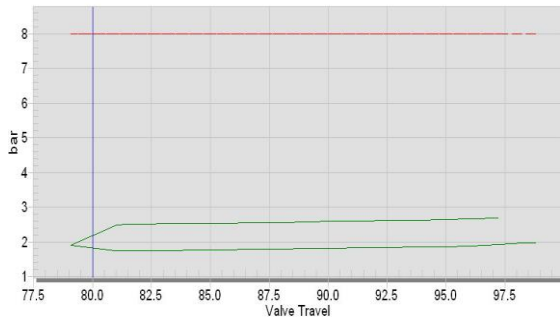


Sample 2 : Day 10

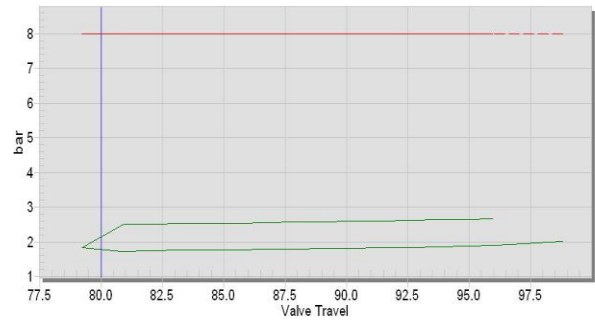
Test Date : January 14<sup>th</sup> , 2009

Time : 8:50 am – 10:05 am

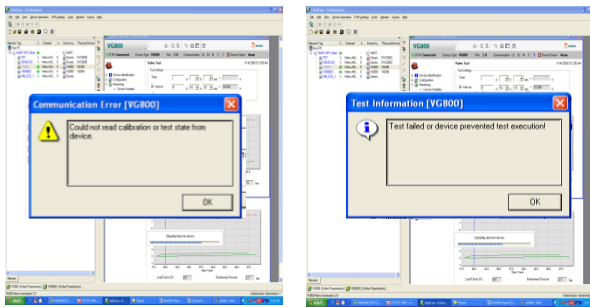
First Stroke:



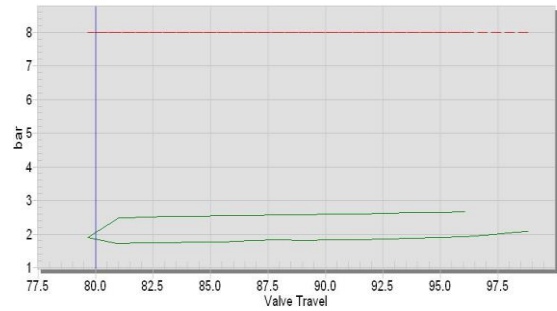
Second Stroke:



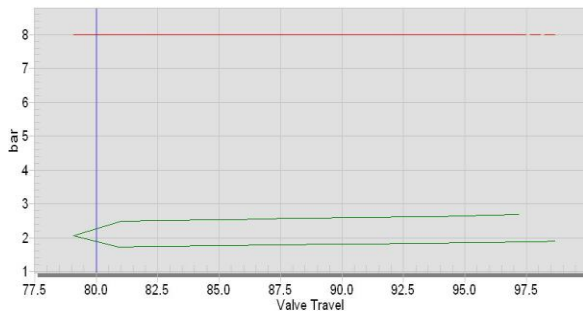
Third Stroke – PST + FST:



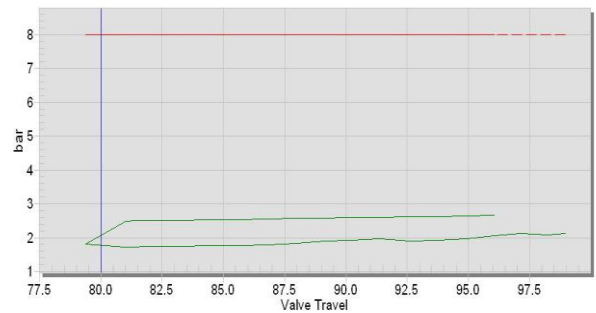
Forth Stroke:



Fifth Stroke:



Sixth Stroke:



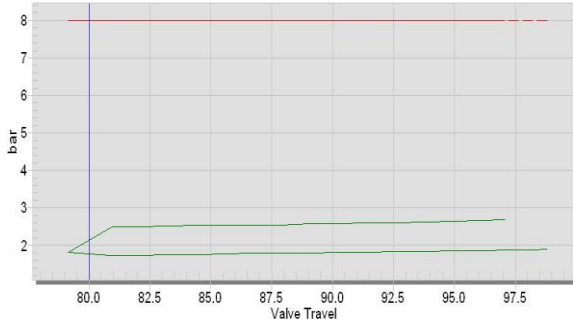


Sample 3 : Day 20

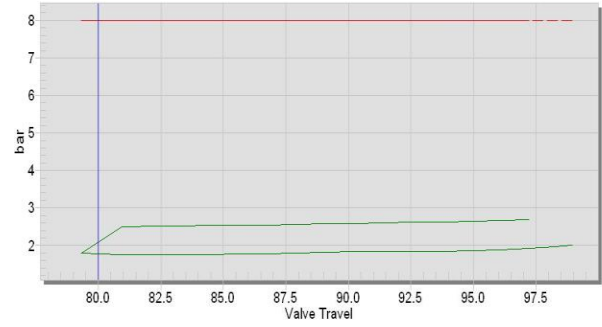
Test Date : January 24<sup>th</sup> , 2009

Time : 9:00 am – 10:15 am

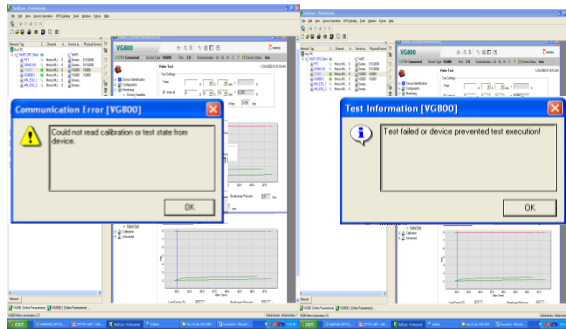
First Stroke:



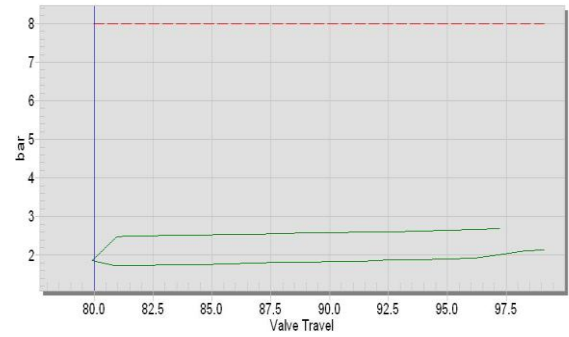
Second Stroke:



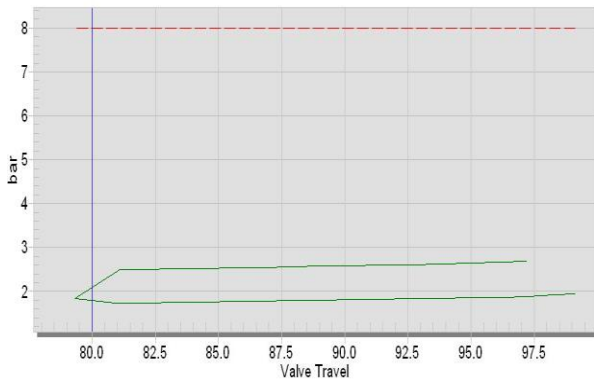
Third Stroke – PST + FST:



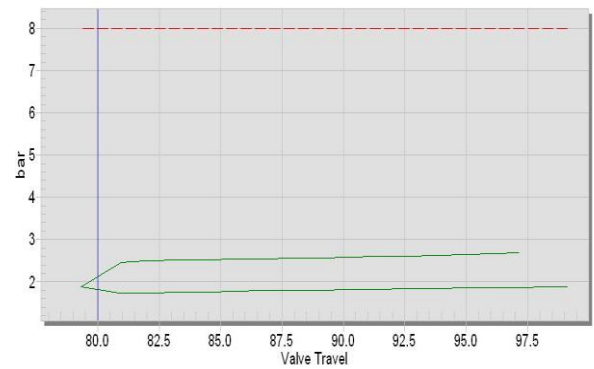
Forth Stroke:



Fifth Stroke:



Sixth Stroke:

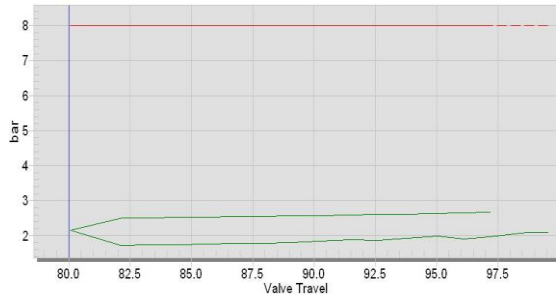


Sample 4 : Day 30

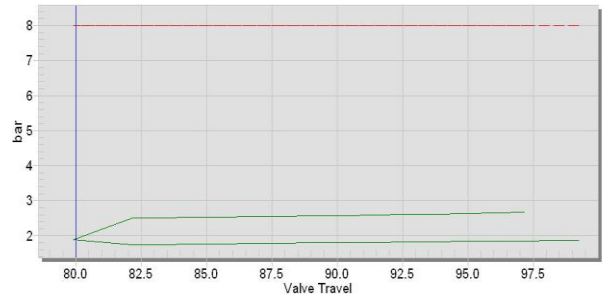
Test Date : February 12<sup>th</sup> , 2009

Time : 11:20 am – 12:35 pm

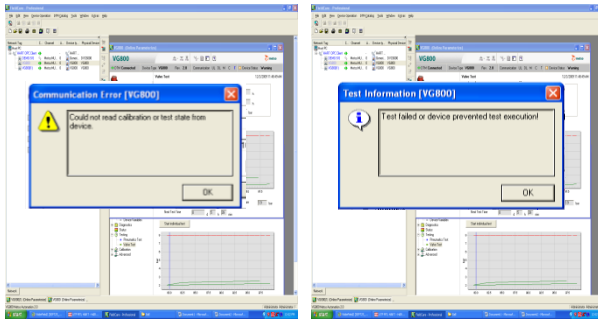
First Stroke:



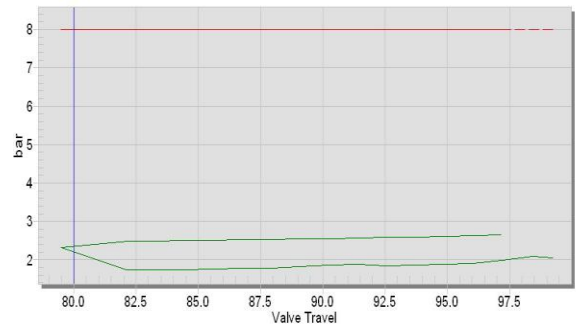
Second Stroke:



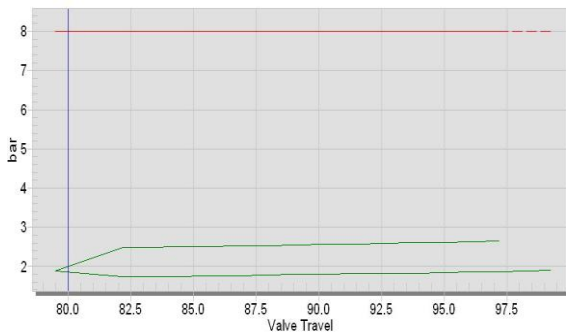
Third Stroke – PST + FST:



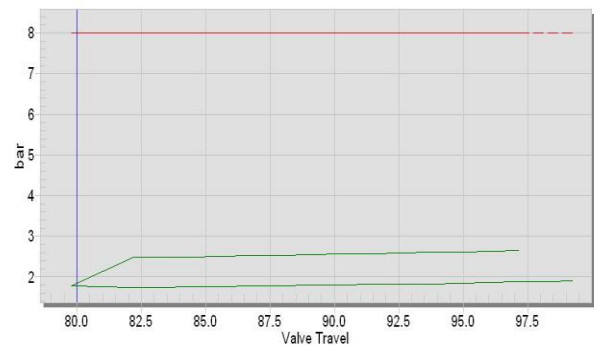
Forth Stroke:



Fifth Stroke:



Sixth Stroke:

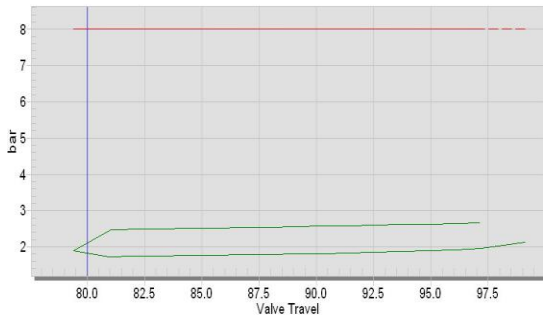


Sample 5 : Day 40

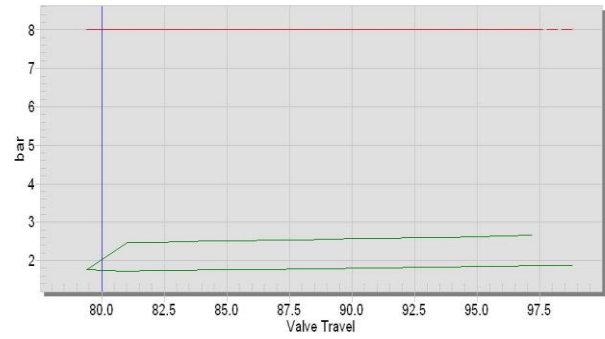
Test Date : February 28<sup>th</sup> , 2009

Time : 2:40 pm – 3:55 pm

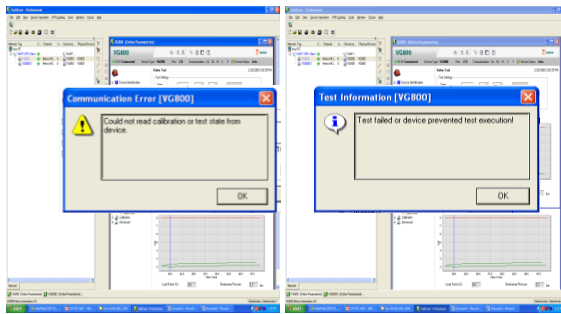
First Stroke:



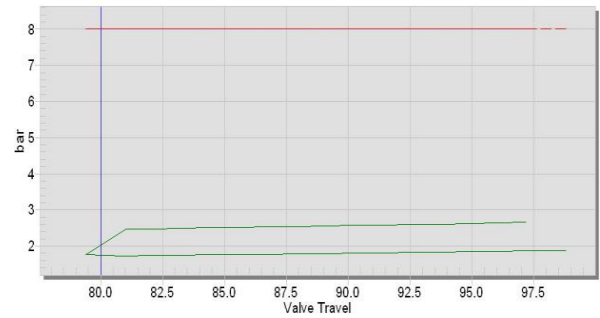
Second Stroke:



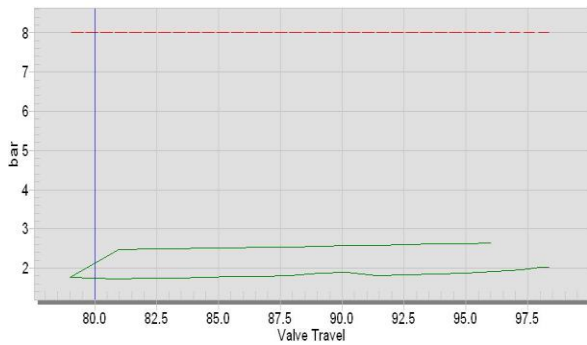
Third Stroke – PST + FST:



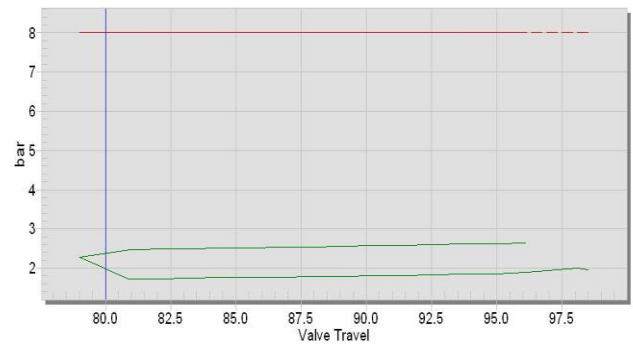
Forth Stroke:



Fifth Stroke:



Sixth Stroke:

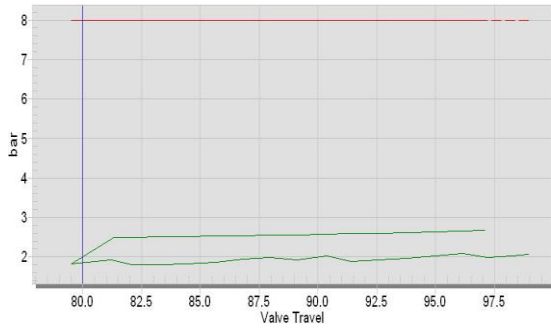


Sample 6 : Day 50

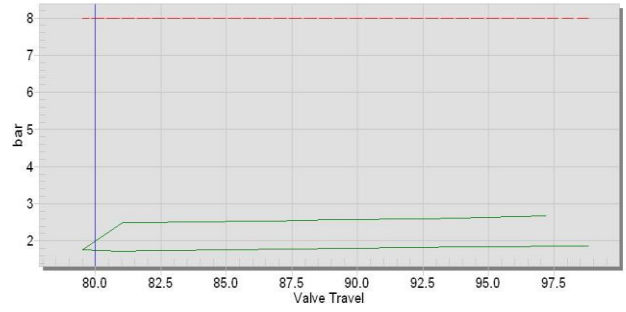
Test Date : March 16<sup>th</sup> , 2009

Time : 9:00 am – 10:15 am

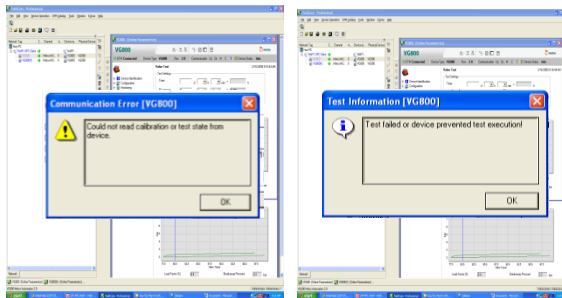
First Stroke:



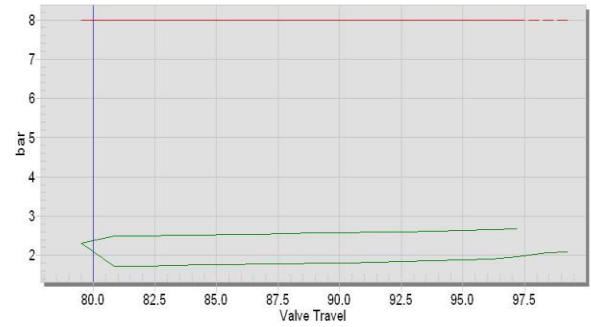
Second Stroke:



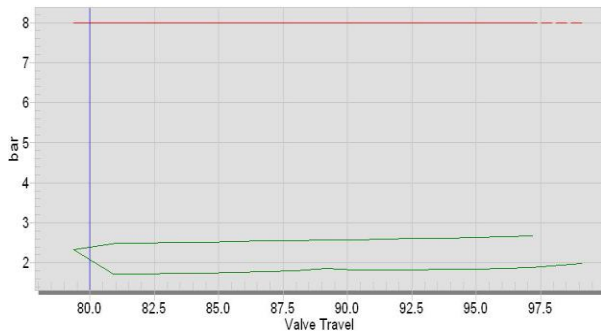
Third Stroke – PST + FST:



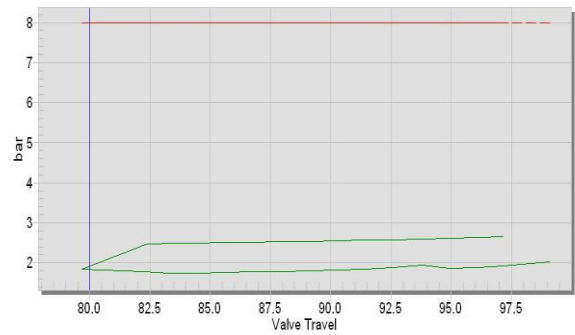
Forth Stroke:



Fifth Stroke:



Sixth Stroke:

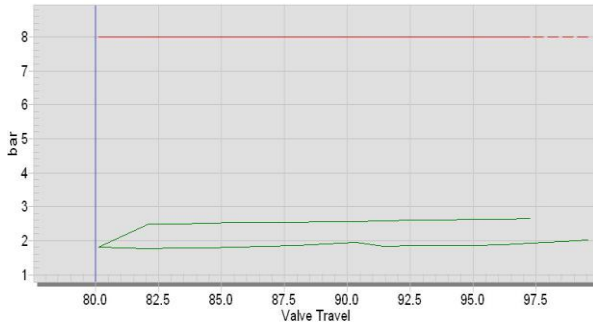


Sample 7 : Day 60

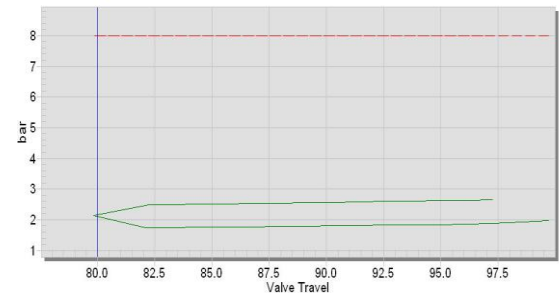
Test Date: July 26<sup>th</sup>, 2009

Time : 12:45 pm – 2:00 pm

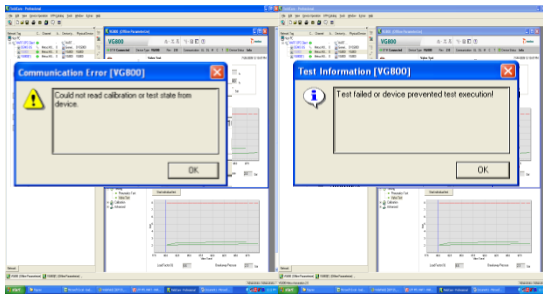
First Stroke:



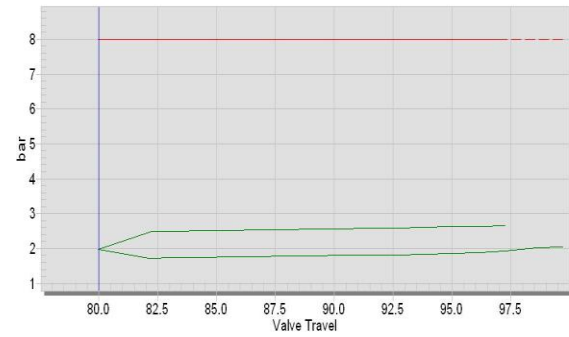
Second Stroke:



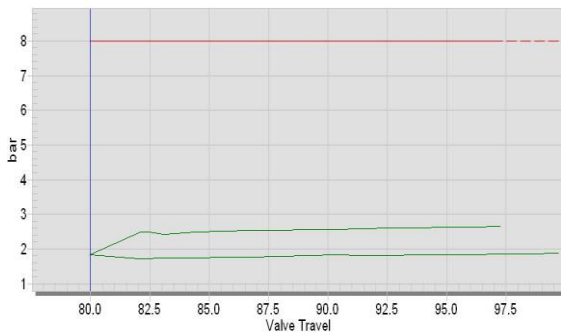
Third Stroke – PST + FST:



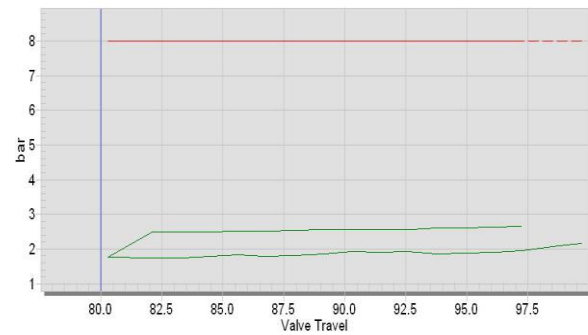
Forth Stroke:



Fifth Stroke:

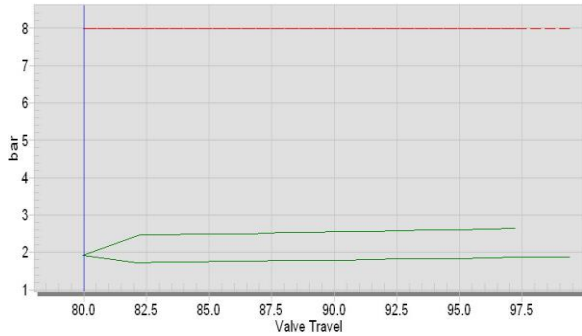


Sixth Stroke:

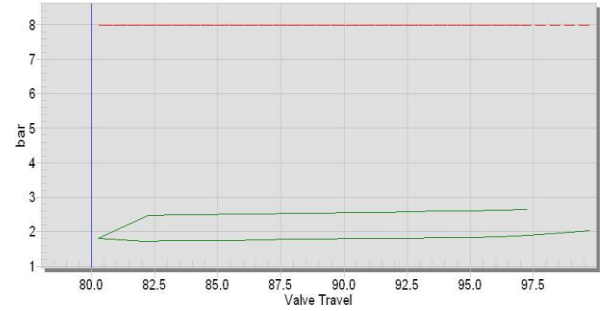


Sample 8 : Day 70  
 Test Date : August, 21<sup>st</sup> 2009  
 Time : 11.50 am – 1:15 pm

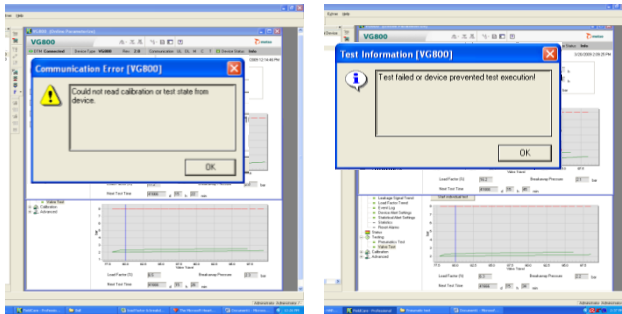
First Stroke:



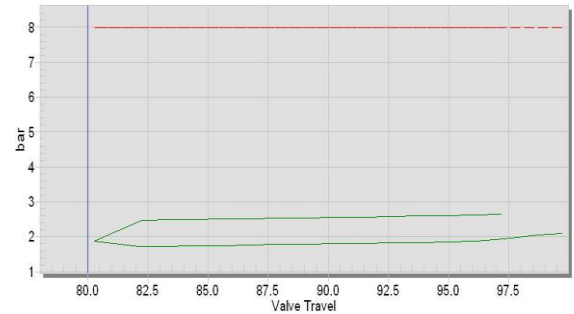
Second Stroke:



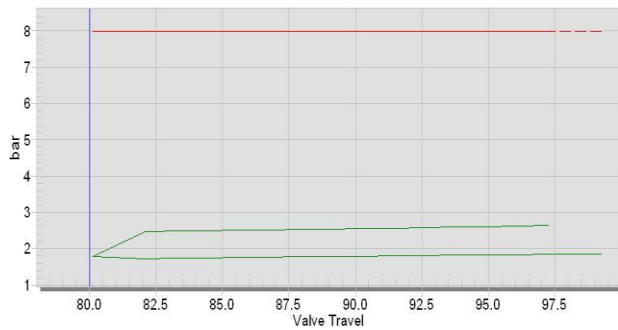
Third Stroke – PST + FST:



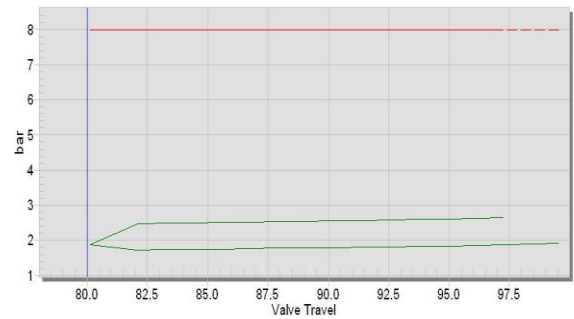
Forth Stroke:



Fifth Stroke:



Sixth Stroke:



## APPENDIX VIII

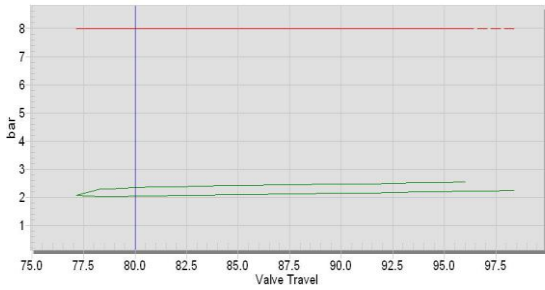
### Test Result for Butterfly Valve

Sample 1 : Day 1

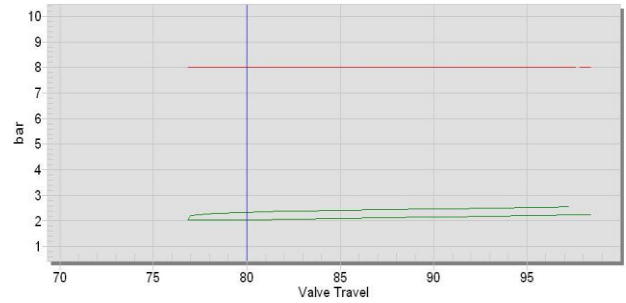
Test Date : December 22<sup>nd</sup> , 2008

Time : 10.20am – 11.35 am

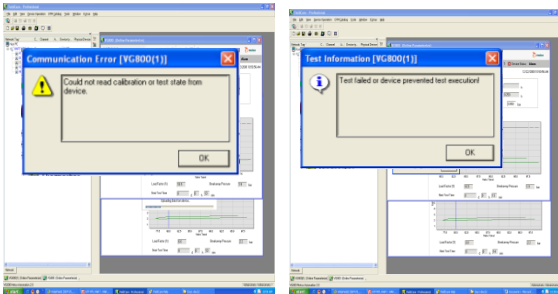
First Stroke:



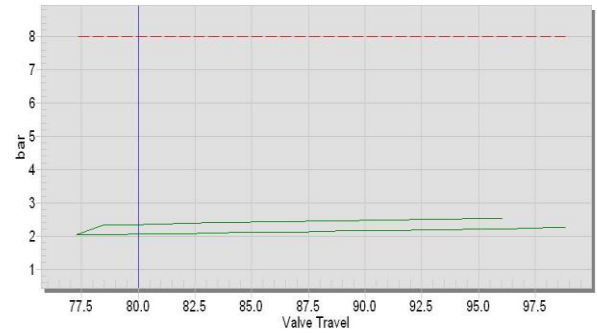
Second Stroke:



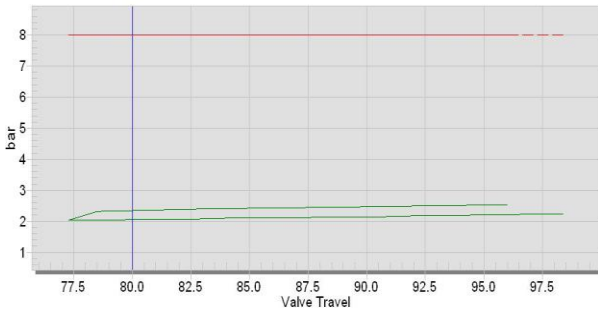
Third Stroke – PST + FST:



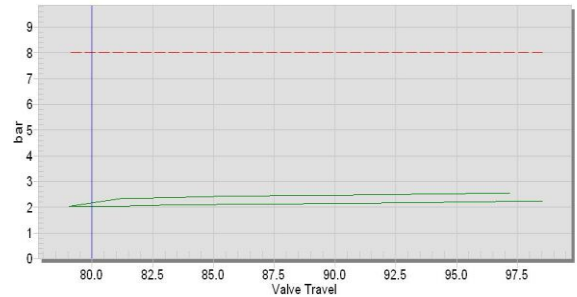
Forth Stroke:



Fifth Stroke:



Sixth Stroke:

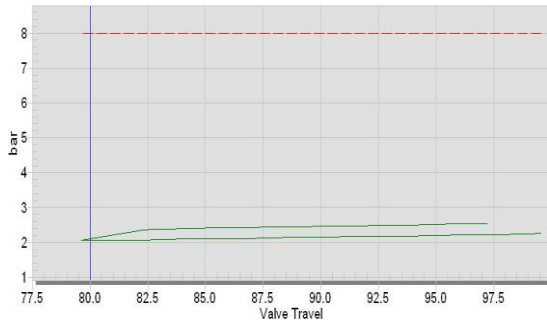


Sample 2 : Day 10

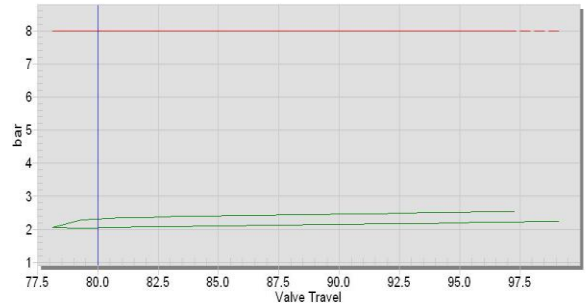
Test Date : January 14<sup>th</sup> , 2009

Time : 8:50 am – 10:05 am

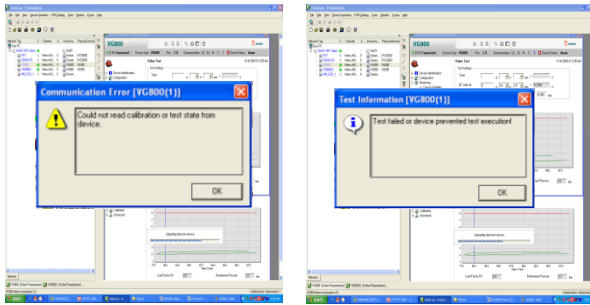
First Stroke:



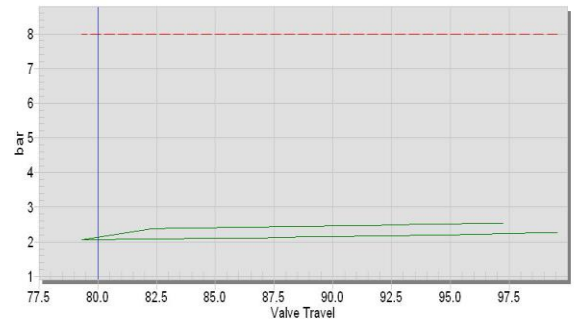
Second Stroke:



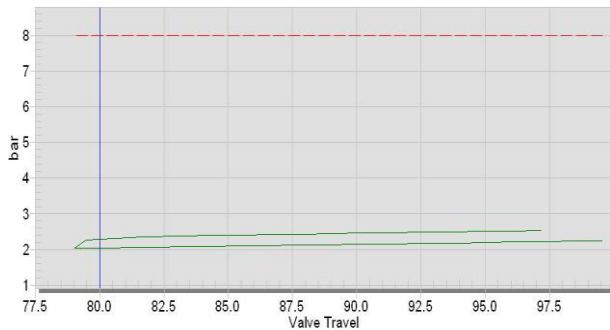
Third Stroke – PST + FST:



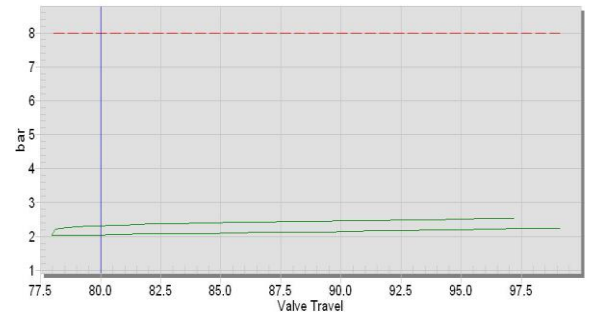
Forth Stroke:



Fifth Stroke:



Sixth Stroke:



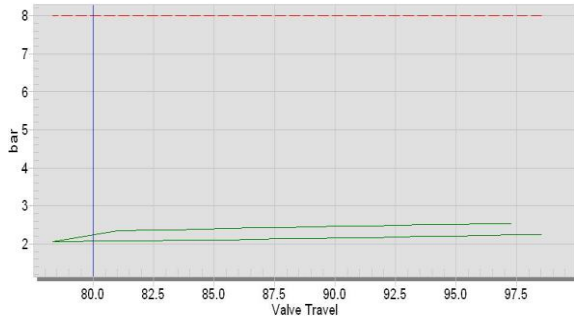


Sample 3 : Day 20

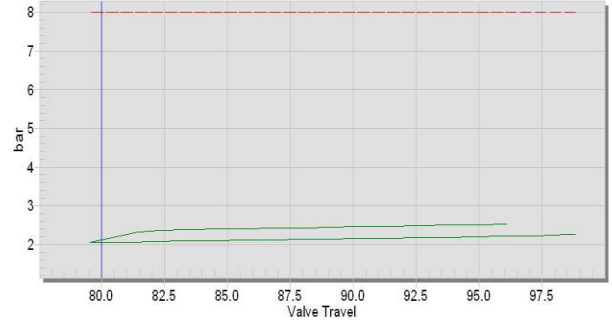
Test Date : January 24<sup>th</sup> , 2009

Time : 9:00 am – 10:15 am

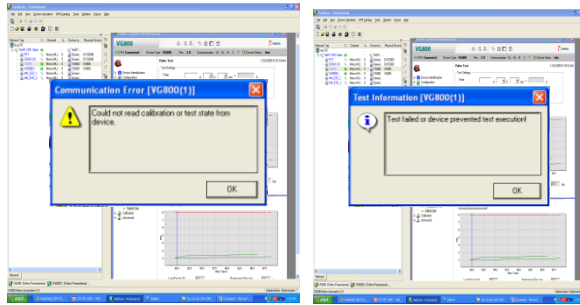
First Stroke:



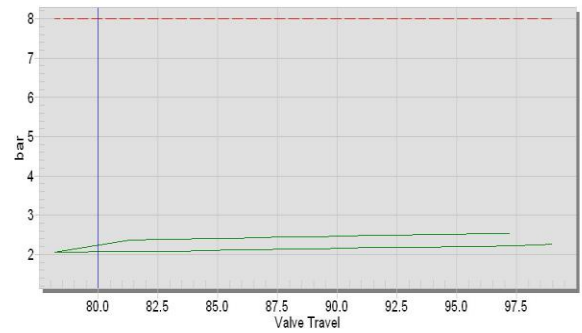
Second Stroke:



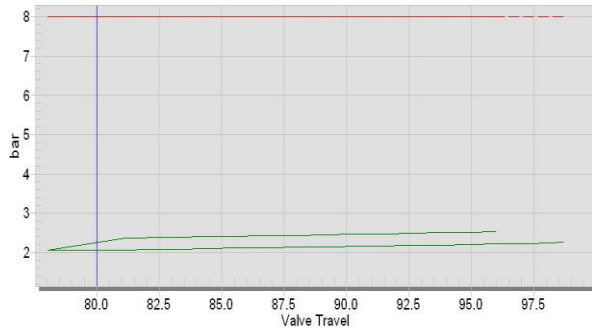
Third Stroke – PST + FST:



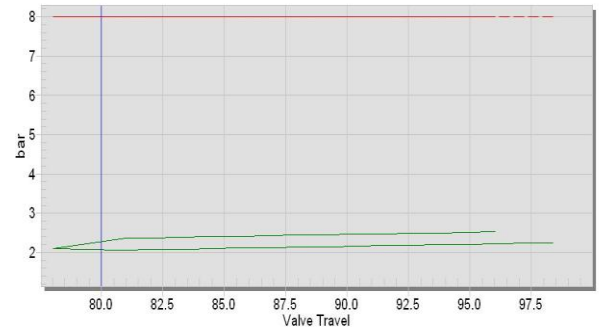
Forth Stroke:



Fifth Stroke:



Sixth Stroke:

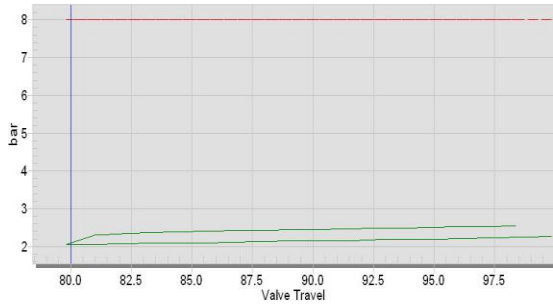


Sample 4 : Day 30

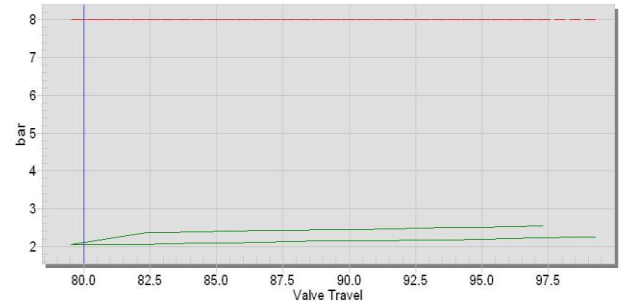
Test Date : February 12<sup>th</sup> , 2009

Time : 11:20 am – 12:35 pm

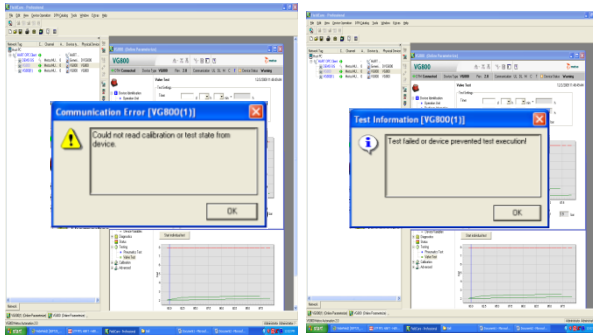
First Stroke:



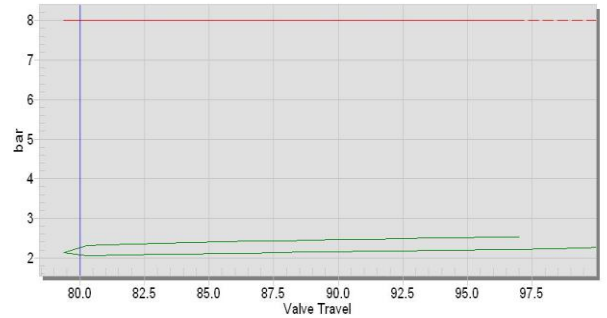
Second Stroke:



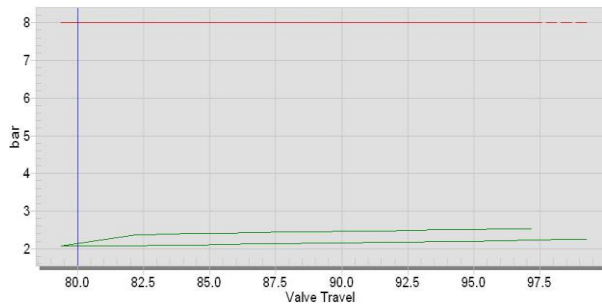
Third Stroke – PST + FST:



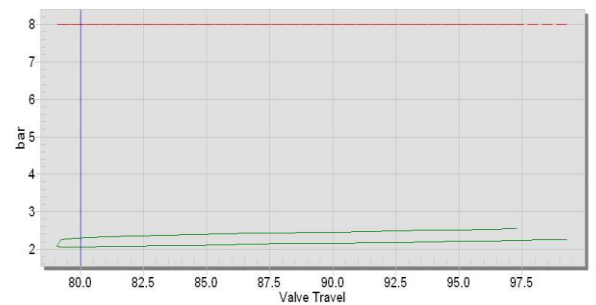
Forth Stroke:



Fifth Stroke:



Sixth Stroke:

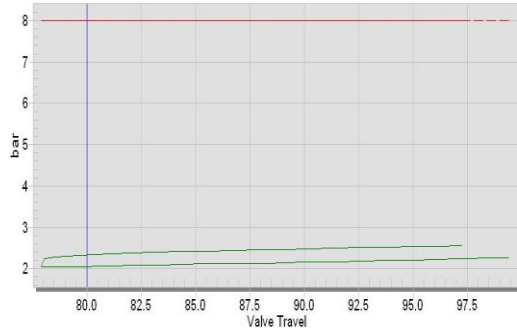


Sample 5 : Day 40

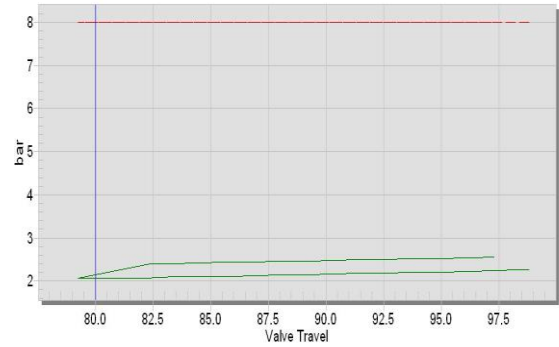
Test Date : February 28<sup>th</sup> , 2009

Time : 2:40 pm – 3:55 pm

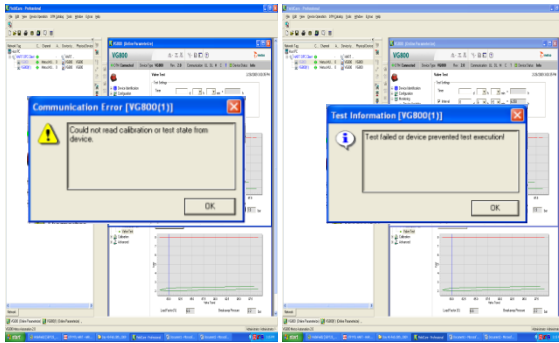
First Stroke:



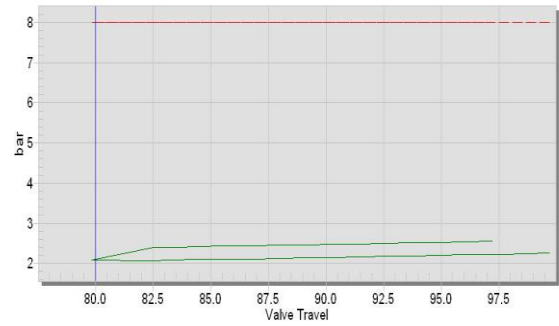
Second Stroke:



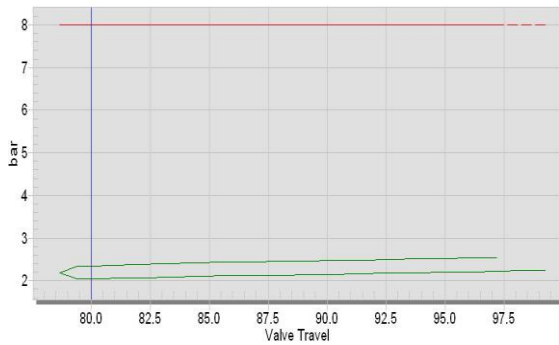
Third Stroke – PST + FST:



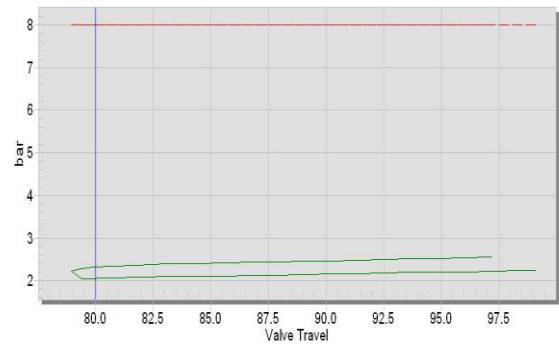
Forth Stroke:



Fifth Stroke:



Sixth Stroke:

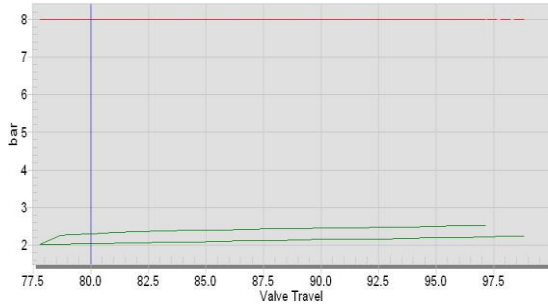


Sample 6 : Day 50

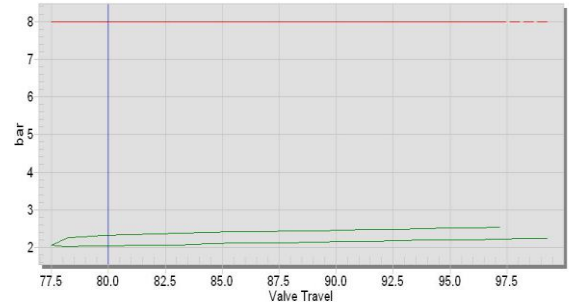
Test Date : March 16<sup>th</sup> , 2009

Time : 9:00 am – 10:15 am

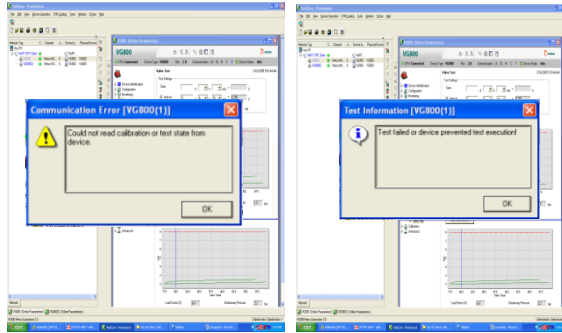
First Stroke:



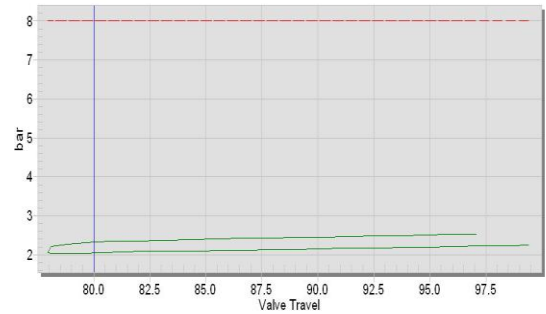
Second Stroke:



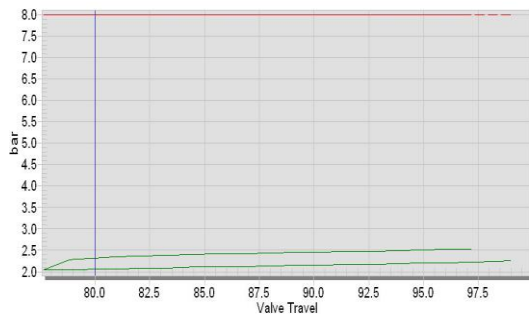
Third Stroke – PST + FST:



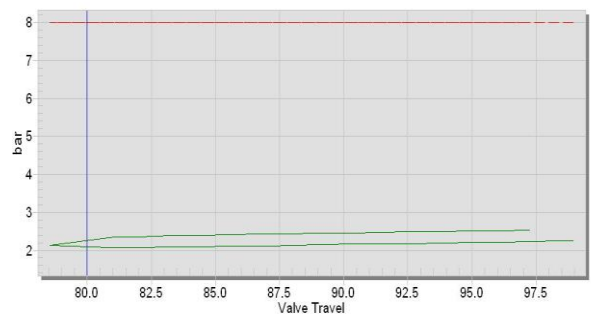
Forth Stroke:



Fifth Stroke:



Sixth Stroke:



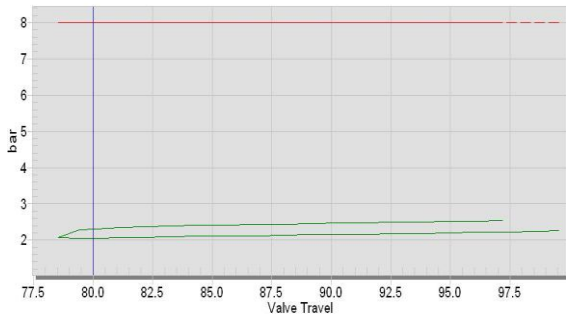
Sample 7 : Day 60

Test Date: July 26<sup>th</sup>, 2009

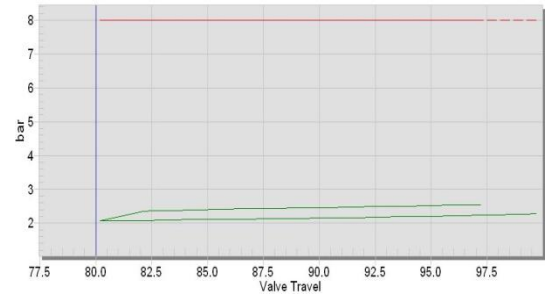
Valve : Metso Neles (Ball Valve)

Time : 12:45 pm – 1:05 pm

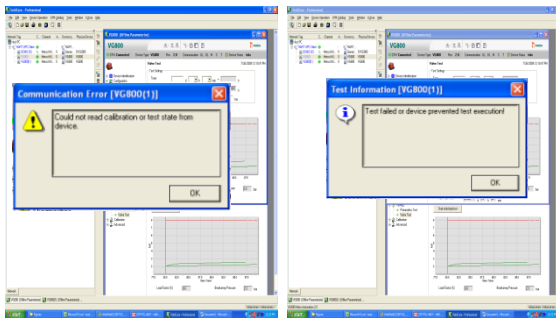
First Stroke:



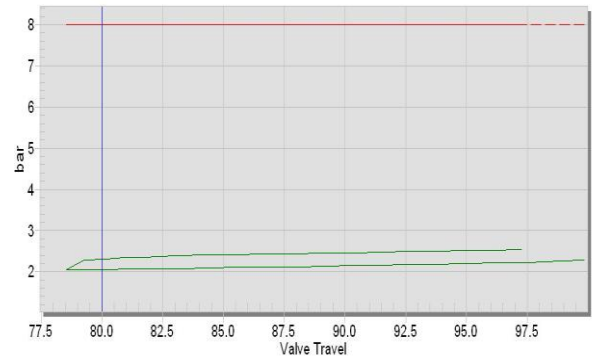
Second Stroke:



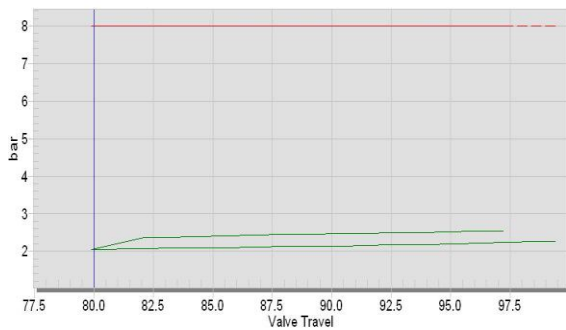
Third Stroke – PST + FST:



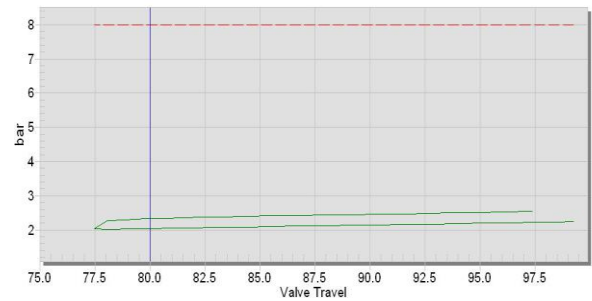
Forth Stroke:



Fifth Stroke:

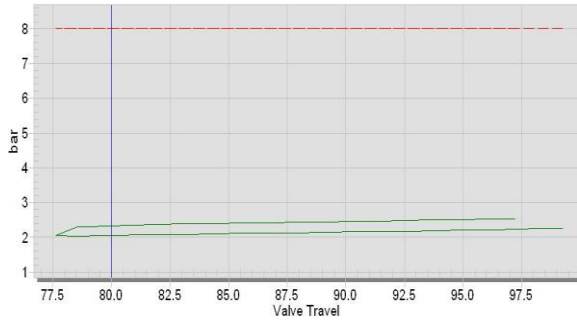


Sixth Stroke:

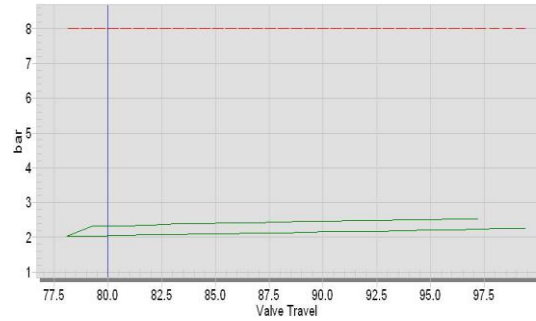


Sample 8 : Day 70  
Test Date : August, 21<sup>st</sup> 2009  
Time : 11.50 am – 1:15 pm

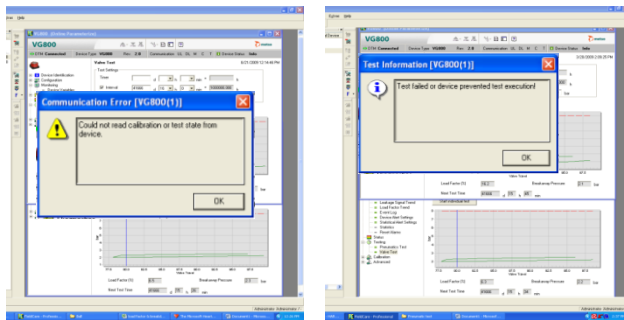
First Stroke:



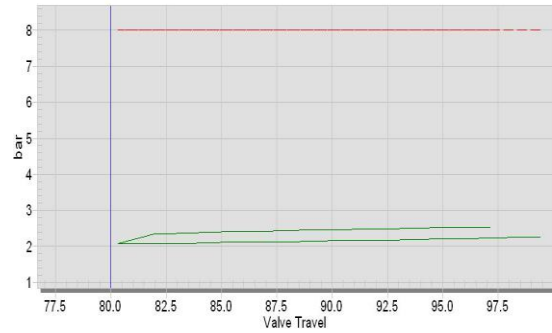
Second Stroke:



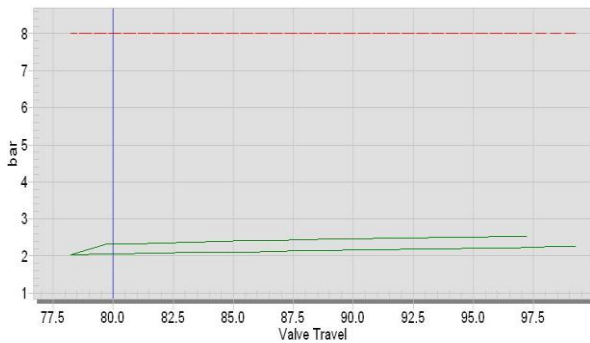
Third Stroke – PST + FST:



Forth Stroke:



Fifth Stroke:



Sixth Stroke:

